

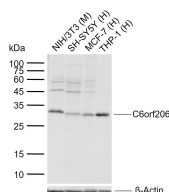
**bs-24834R****[ Primary Antibody ]****C6orf206 Rabbit pAb****Bioss**  
ANTIBODIES

www.bioss.com.cn

sales@bioss.com.cn

techsupport@bioss.com.cn

400-901-9800

**DATASHEET****Host:** Rabbit**Isotype:** IgG**Clonality:** Polyclonal**GeneID:** 221421**SWISS:** Q9H1X1**Target:** C6orf206**Immunogen:** KLH conjugated synthetic peptide derived from human C6orf206: 201-276/276.**Purification:** affinity purified by Protein A**Concentration:** 1mg/ml**Storage:** 0.01M TBS (pH7.4) with 1% BSA, 0.02% Proclin300 and 50% Glycerol.  
Shipped at 4°C. Store at -20°C for one year. Avoid repeated freeze/thaw cycles.**Background:** Probable component of the axonemal radial spoke head. Radial spokes are regularly spaced along cilia, sperm and flagella axonemes. They consist of a thin stalk, which is attached to a subfiber of the outer doublet microtubule, and a bulbous head, which is attached to the stalk and appears to interact with the projections from the central pair of microtubules.**Applications:** WB (1:500-2000)**Reactivity:** Human, Mouse  
(predicted: Rat, Sheep, Cow)**Predicted MW.:** 31 kDa**Subcellular Location:** Cytoplasm**VALIDATION IMAGES**

Sample: Lane 1: Mouse NIH/3T3 cell lysates Lane 2: Human SH-SY5Y cell lysates Lane 3: Human MCF-7 cell lysates Lane 4: Human THP-1 cell lysates  
Primary: Anti-C6orf206 (bs-24834R) at 1/1000 dilution Secondary: IRDye800CW Goat Anti-Rabbit IgG at 1/20000 dilution  
Predicted band size: 31 kDa Observed band size: 33 kDa

**SELECTED CITATIONS**

- **[IF=2.8]** Jeong-Won Bae. et al. Application of sperm motion kinematics and motility-related proteins for prediction of male fertility. THERIOGENOLOGY. 2024 Apr;218:223-233 ELISA ;Pig. 38359560