

bs-6055R**[Primary Antibody]****Bioss**
ANTIBODIES

www.bioss.com.cn

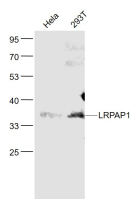
sales@bioss.com.cn

techsupport@bioss.com.cn

400-901-9800

LRPAP1 Rabbit pAb**— DATASHEET —**

Host: Rabbit	Isotype: IgG	Applications: WB (1:500-2000)
Clonality: Polyclonal		Reactivity: Human (predicted: Mouse, Rat, Pig)
GeneID: 4043	SWISS: P30533	
Target: LRPAP1		Predicted MW.: 38 kDa
Immunogen: KLH conjugated synthetic peptide derived from human LRPAP1/MRAP: 131-330/357.		Subcellular Location: Extracellular matrix ,Cell membrane ,Cytoplasm
Purification: affinity purified by Protein A		
Concentration: 1mg/ml		
Storage: 0.01M TBS (pH7.4) with 1% BSA, 0.02% Proclin300 and 50% Glycerol. Shipped at 4°C. Store at -20°C for one year. Avoid repeated freeze/thaw cycles.		
Background: A2MRAP; A2RAP; Alpha 2 macroglobulin receptor associated protein; Alpha 2 MRAP; HBP44; Lipoprotein receptor associated protein; Low density lipoprotein receptor related protein associated protein 1; Low density lipoprotein related protein associated protein 1 alpha 2 macroglobulin receptor associated protein; Low density lipoprotein related protein associated protein 1; LRPAP1; MRAP; RAP.		

— VALIDATION IMAGES —

Sample: Hela (Human) Cell Lysate at 30 ug 293T
(Human) Cell Lysate at 30 ug Primary: Anti-
LRPAP1 (bs-6055R) at 1/1000 dilution Secondary:
IRDye800CW Goat Anti-Rabbit IgG at 1/20000
dilution Predicted band size: 38 kD Observed
band size: 38 kD