

bs-2446R**[Primary Antibody]****phospho-eIF4E (Ser209) Rabbit pAb**

Bioss
ANTIBODIES

www.bioss.com.cn

sales@bioss.com.cn

techsupport@bioss.com.cn

400-901-9800

DATASHEET**Host:** Rabbit**Isotype:** IgG**Clonality:** Polyclonal**GeneID:** 1977**SWISS:** P06730**Target:** eIF4E (Ser209)**Immunogen:** KLH conjugated Synthesised phosphopeptide derived from human eIF4E around the phosphorylation site of Ser209: SG(p-S)TT.**Purification:** affinity purified by Protein A**Concentration:** 1mg/ml**Storage:** 0.01M TBS (pH7.4) with 1% BSA, 0.02% Proclin300 and 50% Glycerol.

Shipped at 4°C. Store at -20°C for one year. Avoid repeated freeze/thaw cycles.

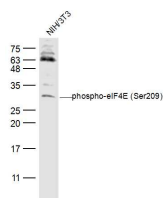
Background: eIF4E, a protein modulates translation of maternal mRNAs in early embryos before the onset of zygotic transcription. eIF4E also influences the overall rate of translation. eIF4E binds to the 7 methyl GTP cap structure of eukaryotic mRNAs. Phosphorylation of eIF4E on serine 209 regulates the affinity of this protein for the 7 methyl GTP cap and/or RNA. Phosphorylation also enhances the interaction of eIF4E with eIF4G, which form a complex known as eIF4F. eIF4E phosphorylation is correlated with increased translational rate in a number of cell types. Several kinases are currently being investigated as potential regulators of eIF4E including PKC and/or the MAP kinase activated Mnk.

Applications: WB (1:500-2000)**IHC-P** (1:100-500)**IHC-F** (1:100-500)**IF** (1:100-500)**Flow-Cyt** (0.2ug/test)

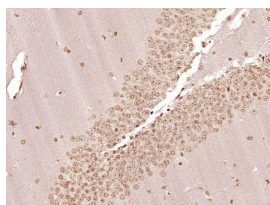
Reactivity: Human, Mouse, Rat
(predicted: Rabbit, Pig,
Cow, Zebrafish, Chicken,
Dog, Horse)

**Predicted
MW.:** 24 kDa

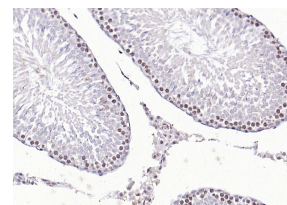
**Subcellular
Location:** Cytoplasm ,Nucleus

VALIDATION IMAGES

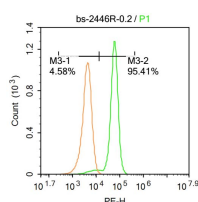
Sample: NIH/3T3(Mouse) Cell Lysate at 30 ug
Primary: Anti-phospho-eIF4E (Ser209) (bs-2446R)
at 1/500 dilution Secondary: IRDye800CW Goat
Anti-Rabbit IgG at 1/20000 dilution Predicted
band size: 24 kD Observed band size: 28 kD



Paraformaldehyde-fixed, paraffin embedded
(Mouse brain); Antigen retrieval by boiling in
sodium citrate buffer (pH6.0) for 15min; Block
endogenous peroxidase by 3% hydrogen
peroxide for 20 minutes; Blocking buffer (normal
goat serum) at 37°C for 30min; Antibody
incubation with (phospho-eIF4E (Ser209))
Polyclonal Antibody, Unconjugated (bs-2446R)
at 1:400 overnight at 4°C, followed by operating
according to SP Kit(Rabbit) (sp-0023)
instructionsand DAB staining.



Paraformaldehyde-fixed, paraffin embedded (rat
testis); Antigen retrieval by boiling in sodium
citrate buffer (pH6.0) for 15min; Block
endogenous peroxidase by 3% hydrogen
peroxide for 20 minutes; Blocking buffer (normal
goat serum) at 37°C for 30min; Antibody
incubation with (phospho-eIF4E (Ser209))
Polyclonal Antibody, Unconjugated (bs-2446R)
at 1:200 overnight at 4°C, followed by operating
according to SP Kit(Rabbit) (sp-0023)
instructionsand DAB staining.



Blank control:Molt-4. Primary Antibody (green
line): Rabbit Anti-phospho-eIF4E (Ser209)
antibody (bs-2446R) Dilution: 0.2µg/10⁶ cells;

Important Note: This product as supplied is intended for research use only, not for use in human, therapeutic or diagnostic applications.

Isotype Control Antibody (orange line): Rabbit IgG . Secondary Antibody : Goat anti-rabbit IgG-PE Dilution: 0.2µg /test. Protocol The cells were fixed with 4% PFA (10min at room temperature)and then permeabilized with 20% PBST for 20 min at -20°C. The cells were then incubated in 5%BSA to block non-specific protein-protein interactions for 30 min at room temperature .Cells stained with Primary Antibody for 30 min at room temperature. The secondary antibody used for 40 min at room temperature. Acquisition of 20,000 events was performed.