

bs-2769R**[Primary Antibody]****GRB10 Rabbit pAb****Bioss**
ANTIBODIES

www.bioss.com.cn

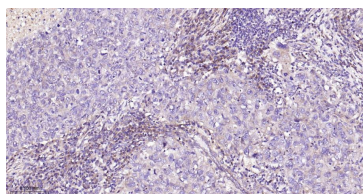
sales@bioss.com.cn

techsupport@bioss.com.cn

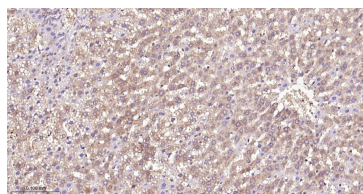
400-901-9800

— DATASHEET —

Host: Rabbit	Isotype: IgG	Applications: IHC-P (1:100-500) IHC-F (1:100-500) IF (1:100-500) Reactivity: Human, Mouse, Rat (predicted: Rabbit, Pig, Cow, Dog, Horse) Predicted MW.: 65 kDa Subcellular Location: Cytoplasm
Clonality: Polyclonal		
GeneID: 2887	SWISS: Q13322	
Target: GRB10		
Immunogen: KLH conjugated synthetic peptide derived from human GRB10: 501-594/594.		
Purification: affinity purified by Protein A		
Concentration: 1mg/ml		
Storage: 0.01M TBS (pH7.4) with 1% BSA, 0.02% Proclin300 and 50% Glycerol. Shipped at 4°C. Store at -20°C for one year. Avoid repeated freeze/thaw cycles.		
Background: GRB 10 belongs to a small family of adapter proteins that interact with receptor tyrosine kinases and signaling molecules. In particular, GRB 10 interacts with insulin receptors and insulin-like growth-factor receptors. Alternatively spliced transcript variants encoding different isoforms have been identified: overexpression of some of them inhibits tyrosine kinase activity and results in growth suppression. This gene is imprinted in a highly isoform- and tissue-specific manner.		

— VALIDATION IMAGES —

Paraformaldehyde-fixed, paraffin embedded Human Breast Cancer; Antigen retrieval by boiling in sodium citrate buffer (pH6.0) for 15 min; The section was incubated with GRB10 Polyclonal Antibody, Unconjugated (bs-2769R) at 1:200 overnight at 4°C, followed by conjugation to the bs-0295G-HRP and DAB (C-0010) staining.



Paraformaldehyde-fixed, paraffin embedded Rat Liver; Antigen retrieval by boiling in sodium citrate buffer (pH6.0) for 15 min; The section was incubated with GRB10 Polyclonal Antibody, Unconjugated (bs-2769R) at 1:200 overnight at 4°C, followed by conjugation to the bs-0295G-HRP and DAB (C-0010) staining.