

bs-9339R**[Primary Antibody]****BioSS**
ANTIBODIES

www.bioss.com.cn

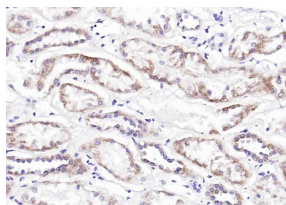
sales@bioss.com.cn

techsupport@bioss.com.cn

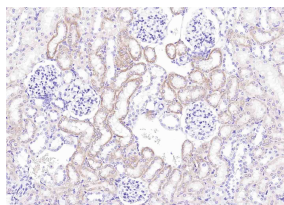
400-901-9800

MARCH5 Rabbit pAb**— DATASHEET —**

Host: Rabbit	Isotype: IgG	Applications: IHC-P (1:100-500) IHC-F (1:100-500) IF (1:50-200) Reactivity: Human, Mouse (predicted: Rat, Cow, Chicken, Dog) Predicted MW.: 31 kDa Subcellular Location: Cell membrane ,Cytoplasm
Clonality: Polyclonal		
GeneID: 54708	SWISS: Q9NX47	
Target: MARCH5		
Immunogen: KLH conjugated synthetic peptide derived from human MARCH5: 1-100/278.		
Purification: affinity purified by Protein A		
Concentration: 1mg/ml		
Storage: 0.01M TBS (pH7.4) with 1% BSA, 0.02% Proclin300 and 50% Glycerol. Shipped at 4°C. Store at -20°C for one year. Avoid repeated freeze/thaw cycles.		
Background: MARCH5 is a member of the E3 ubiquitin-protein ligase family. This mitochondrial E3 ubiquitin-protein ligase plays an important role in controlling the morphology of the mitochondria. E3 ubiquitin ligases accept ubiquitin from an E2 ubiquitin-conjugating enzyme in the form of a thioester and then directly transfer the ubiquitin to targeted substrates. MARCH5 has been shown to interact with MTFN2 and ubiquitinated forms of DRP1.		

— VALIDATION IMAGES —

Paraformaldehyde-fixed, paraffin embedded (human kidney); Antigen retrieval by boiling in sodium citrate buffer (pH6.0) for 15min; Block endogenous peroxidase by 3% hydrogen peroxide for 20 minutes; Blocking buffer (normal goat serum) at 37°C for 30min; Incubation with (MARCH5) Polyclonal Antibody, Unconjugated (bs-9339R) at 1:200 overnight at 4°C, followed by operating according to SP Kit(Rabbit) (sp-0023) instructions and DAB staining.



Paraformaldehyde-fixed, paraffin embedded (mouse kidney); Antigen retrieval by boiling in sodium citrate buffer (pH6.0) for 15min; Block endogenous peroxidase by 3% hydrogen peroxide for 20 minutes; Blocking buffer (normal goat serum) at 37°C for 30min; Incubation with (MARCH5) Polyclonal Antibody, Unconjugated (bs-9339R) at 1:200 overnight at 4°C, followed by operating according to SP Kit(Rabbit) (sp-0023) instructions and DAB staining.

— SELECTED CITATIONS —

- **[IF=8.59]** Hu et al. MARCH5 RNA promotes autophagy, migration, and invasion of ovarian cancer cells. (2017) Autophagy. 13:333-344 IHC,ICC ;Human. 27875077