

[Primary Antibody]

Complement C3 Rabbit pAb



BioSS
ANTIBODIES

www.bioss.com.cn

sales@bioass.com.cn

techsupport@bioss.com.cn

400-901-9800

— DATASHEET

Host: Rabbit

Isotype: IgG

Applications: WB (1:500-2000)

Clonality: Polyclonal

GeneID: 718

SWISS: P01024

Target: Complement C3

Immunogen: KLH conjugated synthetic peptide derived from human Complement C3 alpha chain: 1551-1663/1663.

Purification: affinity purified by Protein A

Concentration: 1mg/ml

Storage: 0.01M TBS (pH7.4) with 1% BSA, 0.02% Proclin300 and 50% Glycerol.

Shipped at 4°C. Store at -20°C for one year. Avoid repeated freeze/thaw cycles.

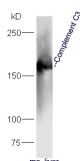
Background: The complement factor C3 consists of an alpha and a beta chain. C3 is a central factor in the complement cascade. It is central to the alternative pathway that leads to the C3 convertase C3bBb. The classical mannose binding lectin activation pathway leads to the C3 convertase C4b2a. These convertases cleave C3 resulting in C3a and C3b. Further degradation leads to the formation of the alpha chain products C3d, C3g and C3c. C3 is an acute phase protein that is produced by a wide range of tissues, including renal epithelial cells and hepatocytes.

Reactivity: Human

Predicted MW.: 181 kDa

Subcellular Location: Secreted

— VALIDATION IMAGES



Protein: mouse liver lysate at 40ug; Primary: rabbit Anti-Complement C3 (bs-2934R) at 1:300; Secondary: HRP conjugated Goat-Anti-rabbit IgG(bs-0295G-HRP) at 1: 5000; Predicted band size: 181 kD Observed band size: 181 kD

— SELECTED CITATIONS

- **[IF=15.1]** Suzanne M. Green-Fulgham. et al. Voluntary wheel running prevents formation of membrane attack complexes and myelin degradation after peripheral nerve injury. BRAIN BEHAV IMMUN. 2023 Nov;; IHC ;Rat. 37924957
- **[IF=7.76]** Zhuang, Haoyang, et al. "A novel mechanism for generating the interferon signature in lupus: opsonization of dead cells by complement and IgM." Arthritis & Rheumatology (2016). ELISA ;="Human, Mouse". 27274010
- **[IF=7.543]** Yao L et al. The proteasome activator REGγ counteracts immunoproteasome expression and autoimmunity. J Autoimmun. 2019 Jun 3. IF ;MOUSE. 31171475
- **[IF=4.825]** Bai, L et al. Renoprotective Effects of Artemisinin and Hydroxychloroquine Combination Therapy on IgA Nephropathy via Suppressing NF-κB Signaling and NLRP3 Inflammasome Activation by Exosomes in Rats. Biochemical Pharmacology. 2019 Aug22. IF ;Rat. doi:10.1016/j.bcp.2019.08.021
- **[IF=4.5]** Rogińska, Dorota, et al. "Depletion of the Third Complement Component Ameliorates Age-Dependent Oxidative Stress and Positively Modulates Autophagic Activity in Aged Retinas in a Mouse Model." Oxidative Medicine and Cellular

Important Note: This product as supplied is intended for research use only, not for use in human, therapeutic or diagnostic applications.

Longevity 2017 (2017). IHC ;="Mouse". 28928904