

bs-13577R**[Primary Antibody]****ZBTB42 Rabbit pAb****Bioss**
ANTIBODIES

www.bioss.com.cn

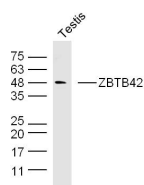
sales@bioss.com.cn

techsupport@bioss.com.cn

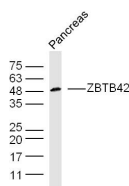
400-901-9800

— DATASHEET —

Host: Rabbit	Isotype: IgG	Applications: WB (1:500-2000)
Clonality: Polyclonal		Reactivity: Mouse (predicted: Human, Rat, Rabbit, Pig, Sheep, Cow, Chicken, Dog, Horse)
GeneID: 100128927	SWISS: B2RXF5	
Target: ZBTB42		Predicted MW.: 46 kDa
Immunogen: KLH conjugated synthetic peptide derived from human ZBTB42/ZNF925: 341-422/422.		Subcellular Location: Nucleus
Purification: affinity purified by Protein A		
Concentration: 1mg/ml		
Storage: 0.01M TBS (pH7.4) with 1% BSA, 0.02% Proclin300 and 50% Glycerol. Shipped at 4°C. Store at -20°C for one year. Avoid repeated freeze/thaw cycles.		
Background: Transcriptional repressor. Specifically binds DNA and probably acts by recruiting chromatin remodeling multiprotein complexes.		

— VALIDATION IMAGES —

Sample: testis (Mouse) Lysate at 40 ug Primary:
Anti-ZBTB42(bs-13577R) at 1/300 dilution
Secondary: IRDye800CW Goat Anti-Rabbit IgG at
1/20000 dilution Predicted band size: 46 kD
Observed band size: 46 kD



Sample: pancreas (Mouse) Lysate at 40 ug
Primary: Anti-ZBTB42(bs-13577R) at 1/300
dilution Secondary: IRDye800CW Goat Anti-
Rabbit IgG at 1/20000 dilution Predicted band
size: 46 kD Observed band size: 48 kD