

bs-5727R**[Primary Antibody]****HEC1 Rabbit pAb****BioSS**
ANTIBODIES

www.bioss.com.cn

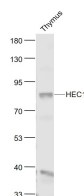
sales@bioss.com.cn

techsupport@bioss.com.cn

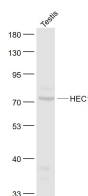
400-901-9800

— DATASHEET —

Host: Rabbit	Isotype: IgG	Applications: WB (1:500-2000)
Clonality: Polyclonal		Reactivity: Mouse (predicted: Human, Rat, Rabbit, Pig, Cow, Dog, Horse)
GeneID: 10403	SWISS: O14777	Predicted MW.: 74 kDa
Target: HEC1		Subcellular Location: Nucleus
Immunogen: KLH conjugated synthetic peptide derived from human HEC1: 21-120/642.		
Purification: affinity purified by Protein A		
Concentration: 1mg/ml		
Storage: 0.01M TBS (pH7.4) with 1% BSA, 0.02% Proclin300 and 50% Glycerol. Shipped at 4°C. Store at -20°C for one year. Avoid repeated freeze/thaw cycles.		
Background: Acts as a component of the essential kinetochore-associated NDC80 complex, which is required for chromosome segregation and spindle checkpoint activity. Required for kinetochore integrity and the organization of stable microtubule binding sites in the outer plate of the kinetochore.		

— VALIDATION IMAGES —

Sample: Thymus (Mouse) Lysate at 40 ug
Primary: Anti- HEC1 (bs-5727R) at 1/1000
dilution Secondary: IRDye800CW Goat Anti-
Rabbit IgG at 1/20000 dilution Predicted band
size: 74 kD Observed band size: 83 kD



Sample: Testis (Mouse) Lysate at 40 ug Primary:
Anti- HEC1 (bs-5727R) at 1/1000 dilution
Secondary: IRDye800CW Goat Anti-Rabbit IgG at
1/20000 dilution Predicted band size: 74 kD
Observed band size: 74 kD