

bs-4215R

[Primary Antibody]

Sin3b Rabbit pAb

Bioss
ANTIBODIES

www.bioss.com.cn

sales@bioss.com.cn

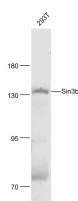
techsupport@bioss.com.cn

400-901-9800

— DATASHEET —

Host: Rabbit	Isotype: IgG	Applications: WB (1:500-2000)
Clonality: Polyclonal		Reactivity: Human (predicted: Mouse, Rat, Sheep, Cow, Chicken, Dog, Horse)
GeneID: 23309	SWISS: O75182	Predicted MW.: 133 kDa
Target: Sin3b		Subcellular Location: Nucleus
Immunogen: KLH conjugated synthetic peptide derived from human Sin3b: 261-360/1162.		
Purification: affinity purified by Protein A		
Concentration: 1mg/ml		
Storage: 0.01M TBS (pH7.4) with 1% BSA, 0.02% Proclin300 and 50% Glycerol. Shipped at 4°C. Store at -20°C for one year. Avoid repeated freeze/thaw cycles.		
Background: Acts as a transcriptional repressor. Interacts with MXI1 to repress MYC responsive genes and antagonize MYC oncogenic activities. Interacts with MAD-MAX heterodimers by binding to MAD. The heterodimer then represses transcription by tethering SIN3B to DNA. Also forms a complex with FOXK1 which represses transcription.		

— VALIDATION IMAGES —



Sample: 293T(Human) Cell Lysate at 30 ug
Primary: Anti- Sin3b (bs-4215R) at 1/1000
dilution Secondary: IRDye800CW Goat Anti-
Rabbit IgG at 1/20000 dilution Predicted band
size: 133 kD Observed band size: 133 kD