

bs-4222R**[Primary Antibody]****PSME3 Rabbit pAb****BioSS**
ANTIBODIES

www.bioss.com.cn

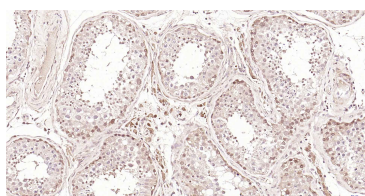
sales@bioss.com.cn

techsupport@bioss.com.cn

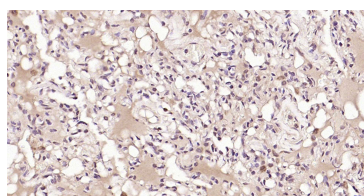
400-901-9800

— DATASHEET —

Host: Rabbit Clonality: Polyclonal GeneID: 10197 Target: PSME3 Immunogen: KLH conjugated synthetic peptide derived from human PSME3: 201-254/254. Purification: affinity purified by Protein A Concentration: 1mg/ml Storage: 0.01M TBS (pH7.4) with 1% BSA, 0.02% Proclin300 and 50% Glycerol. Shipped at 4°C. Store at -20°C for one year. Avoid repeated freeze/thaw cycles. Background: Subunit of the 11S REG-gamma (also called PA28-gamma) proteasome regulator, a donut-shaped homoheptamer which associates with the proteasome. 11S REG-gamma activates the trypsin-like catalytic subunit of the proteasome but inhibits the chymotrypsin-like and postglutamyl-preferring (PGPH) subunits. Facilitates the MDM2-TP53/p53 interaction which promotes ubiquitination- and MDM2-dependent proteasomal degradation of TP53/p53, limiting its accumulation and resulting in inhibited apoptosis after DNA damage. May also be involved in cell cycle regulation.	Isotype: IgG SWISS: P61289	Applications: IHC-P (1:200-500) IHC-F (1:200-500) IF (1:200-500) Reactivity: Human, Mouse, Rat (predicted: Rabbit, Pig, Cow, Chicken, Dog, Horse) Predicted MW.: 28 kDa Subcellular Location: Cytoplasm ,Nucleus
---	---	--

— VALIDATION IMAGES —

Paraformaldehyde-fixed, paraffin embedded Human Testis; Antigen retrieval by boiling in sodium citrate buffer (pH6.0) for 15 min; Antibody incubation with PSME3 Polyclonal Antibody, Unconjugated (bs-4222R) at 1:200 overnight at 4°C, followed by conjugation to the SP Kit (Rabbit, SP-0023) and DAB (C-0010) staining.



Paraformaldehyde-fixed, paraffin embedded Human Lung Cancer; Antigen retrieval by boiling in sodium citrate buffer (pH6.0) for 15 min; Antibody incubation with PSME3 Polyclonal Antibody, Unconjugated (bs-4222R) at 1:200 overnight at 4°C, followed by conjugation to the SP Kit (Rabbit, SP-0023) and DAB (C-0010) staining.

— SELECTED CITATIONS —

- **[IF=3.471]** Kaihui Xie. et al. miR-30d Inhibition Protects IPEC-J2 Cells Against Clostridium perfringens Beta2 Toxin-Induced Inflammatory Injury. FRONT VET SCI. 2022; 9: 909500 WB ;Fig. 35799836