

### [ Primary Antibody ]

## N-Cadherin Rabbit pAb



**BioSS**  
ANTIBODIES

www.bioss.com.cn

sales@bioss.com.cn

techsupport@bioss.com.cn

400-901-9800

## — DATASHEET

**Host:** Rabbit

**Isotype:** IgG

**Applications: WB (1:500-2000)**

**Clonality:** Polyclonal

**GeneID:** 1000

**SWISS:** P19022

**Target:** N-Cadherin

**Immunogen:** KLH conjugated synthetic peptide derived from human N-Cadherin: 750-850-905.

**Purification:** affinity purified by Protein A

**Concentration:** 1mg/ml

**Storage:** 0.01M TBS (pH7.4) with 1% BSA, 0.02% Proclin300 and 50% Glycerol.

Store at -20°C for one year. Avoid repeated freeze/thaw cycles. The lyophilized antibody is stable at room temperature for at least one month and for greater than a year when kept at -20°C. When reconstituted in sterile pH 7.4 0.01M PBS or diluent of antibody the antibody is stable for at least two weeks at 2-4°C.

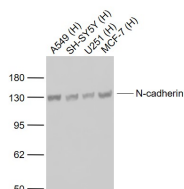
**Background:** This gene is a classical cadherin from the cadherin superfamily. The encoded protein is a calcium dependent cell-cell adhesion glycoprotein comprised of five extracellular cadherin repeats, a transmembrane region and a highly conserved cytoplasmic tail. The protein functions during gastrulation and is required for establishment of left-right asymmetry. At certain central nervous system synapses, presynaptic to postsynaptic adhesion is mediated at least in part by this gene product.

**Reactivity:** Human, Mouse, Rat  
(predicted: Rabbit, Pig,  
Sheep, Cow, Horse)

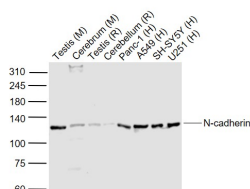
**Predicted MW.:** 97/99 kDa

**Subcellular Location:** Cell membrane

— VALIDATION IMAGES



Sample: Lane 1: A549 (Human) Cell Lysate at 30 ug  
Lane 2: SH-SY5Y (Human) Cell Lysate at 30 ug  
Lane 3: U251 (Human) Cell Lysate at 30 ug  
Lane 4: MCF-7 (Human) Cell Lysate at 30 ug  
Primary: Anti-N-cadherin (bs-55138R) at 1/1000 dilution  
Secondary: IRDye800CW Goat Anti-Rabbit IgG at 1/20000 dilution  
Predicted band size: 130 kD  
Observed band size: 130 kD



Sample: Lane 1: Testis (Mouse) Lysate at 40 ug  
Lane 2: Cerebrum (Mouse) Lysate at 40 ug Lane  
3: Testis (Rat) Lysate at 40 ug Lane 4: Cerebellum  
(Rat) Lysate at 40 ug Lane 5: Panc-1 (Human) Cell  
Lysate at 30 ug Lane 6: A549 (Human) Cell Lysate  
at 30 ug Lane 7: SH-SY5Y (Human) Cell Lysate at  
30 ug Lane 8: U251 (Human) Cell Lysate at 30 ug  
Primary: Anti-N-cadherin (bs-55138R) at 1/1000  
dilution Secondary: IRDye800CW Goat Anti-  
Rabbit IgG at 1/20000 dilution Predicted band  
size: 130 kD Observed band size: 130 kD

## — SELECTED CITATIONS

- **[IF=3.388]** Liu H et al. Circular RNA has\_circ\_0003204 inhibits oxLDL-induced vascular endothelial cell proliferation and angiogenesis. Cell Signal. 2020 Jun;70:109595. **WB ;human.** 32151659
- **[IF=1.5]** Jing Liu. et al. Exosomes Promote Atherosclerosis Progression by Regulating Circ\_100696/miR-503-5p/PAPPA Axis-Mediated Vascular Smooth Muscle Cells Proliferation and Migration. INT HEART J. 2023 Sep;64(5):918-927 **WB ;Human.** 37778995

Important Note: This product as supplied is intended for research use only, not for use in human, therapeutic or diagnostic applications.