
Bcl-2 Rabbit pAb

Catalog Number: bs-33411R

Target Protein: Bcl-2

Concentration: 1mg/ml

Form: Liquid

Host: Rabbit

Clonality: Polyclonal

Isotype: IgG

Applications: WB (1:500-2000), ICC/IF (1:50-200)

Reactivity: Human, Mouse, Rat

Predicted MW: 26 kDa

Entrez Gene: 596

Swiss Prot: P10415

Source: KLH conjugated synthetic peptide derived from human Bcl-2 : 51-150/239.

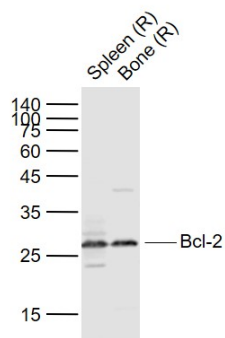
Purification: affinity purified by Protein A

Storage: 0.01M TBS (pH7.4) with 1% BSA, 0.02% Proclin300 and 50% Glycerol.

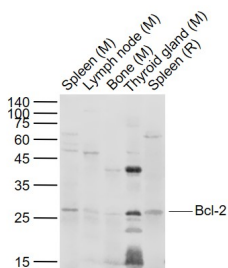
Store at -20°C for one year. Avoid repeated freeze/thaw cycles. The lyophilized antibody is stable at room temperature for at least one month and for greater than a year when kept at -20°C. When reconstituted in sterile pH 7.4 0.01M PBS or diluent of antibody the antibody is stable for at least two weeks at 2-4°C.

Background: The Bcl-2 gene was isolated at the chromosomal breakpoint of t(14;18)-bearing follicular B cell lymphomas(1,2).Bcl-2 blocks cell death following a variety of stimuli and confers a death-sparing effect to certain hematopoietic cell lines following growth factor withdrawal (3,5).Bcl-2 appears to function in several subcellular locations yet lacks any known motifs that would confer insight into its mechanism of action (6,7).A more recently identified protein,designated Bax p21(i.e., Bcl-associated X protein),has extensive amino acid homology with Bcl-2 and both homodimerizes and forms heterodimers with Bcl-2(8). Overexpression of Bax accelerates apoptotic death induced by cytokine deprivation in an IL-3 dependent cell line and Bax also counters the death repressor activity of Bcl-2(8).

VALIDATION IMAGES



Sample: Lane 1: Spleen (Rat) Lysate at 40 ug Lane 2: Bone (Rat) Lysate at 40 ug Primary: Anti- Bcl-2 (bs-33411R) at 1/1000 dilution Secondary: IRDye800CW Goat Anti-Rabbit IgG at 1/20000 dilution Predicted band size: 26 kD Observed band size: 26 kD



Sample: Lane 1: Spleen (Mouse) Lysate at 40 ug Lane 2: Lymph node (Mouse) Lysate at 40 ug Lane 3: Bone (Mouse) Lysate at 40 ug Lane 4: Thyroid gland (Mouse) Lysate at 40 ug Lane 5: Spleen (Rat) Lysate at 40 ug Primary: Anti- Bcl-2 (bs-33411R) at 1/1000 dilution Secondary: IRDye800CW Goat Anti-Rabbit IgG at 1/20000 dilution Predicted band size: 26 kD Observed band size: 26 kD

PRODUCT SPECIFIC PUBLICATIONS

[IF=5.572] Jiayuan Luo. et al. Effects of saponins isolated from Polygonatum sibiricum on H2O2-induced oxidative damage in RIN-m5F cells and its protective effect on pancreas. FOOD CHEM TOXICOL. 2023 May;175:113724 WB,FCM ; Rat . 36935075

[IF=4.175] Junmin Li. et al. Circ_ZFR contributes to the paclitaxel resistance and progression of non-small cell lung cancer by upregulating KPNA4 through sponging miR-195-5p. Cancer Cell Int. 2021 Dec;21(1):1-15 WB ; Human . 33407505

[IF=4.36] Hanyue Ying. et al. CircATL2 enhances paclitaxel resistance of ovarian cancer via impacting miR-506-3p/NFIB axis. 2021 Sep 19 WB ; human . 34541682

[IF=1.73] Chao Wang. et al. Inhibition of monoacylglycerol lipase restrains proliferation, migration, invasion, tumor growth and induces apoptosis in cervical cancer. 2021 Dec 07 WB ; Human . 34877750

[IF=2.303] Suihui Li. et al. Hsa_circ_0048674 facilitates hepatocellular carcinoma progression and natural killer cell exhaustion depending on the regulation of miR-223-3p/PDL1. Histol Histopathol. 2022 Feb 21;18440 WB ; Human . 35187630