

bs-4192R**[Primary Antibody]****SLC25A20 Rabbit pAb****Bioss**
ANTIBODIES

www.bioss.com.cn

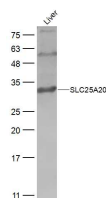
sales@bioss.com.cn

techsupport@bioss.com.cn

400-901-9800

— DATASHEET —

Host: Rabbit	Isotype: IgG	Applications: WB (1:500-2000)
Clonality: Polyclonal		Reactivity: Mouse (predicted: Human, Rat, Rabbit, Cow, Horse)
GeneID: 788	SWISS: O43772	
Target: SLC25A20		Predicted MW.: 33 kDa
Immunogen: KLH conjugated synthetic peptide derived from human SLC25A20: 101-200/301.		Subcellular Location: Cytoplasm
Purification: affinity purified by Protein A		
Concentration: 1mg/ml		
Storage: 0.01M TBS (pH7.4) with 1% BSA, 0.02% Proclin300 and 50% Glycerol. Shipped at 4°C. Store at -20°C for one year. Avoid repeated freeze/thaw cycles.		
Background: SLC25A20 is one of several closely related mitochondrial membrane carrier proteins that shuttle substrates between cytosol and the intramitochondrial matrix space. It mediates the transport of acylcarnitines into the mitochondrial matrix for their oxidation by the mitochondrial fatty acid oxidation pathway. Mutations in this gene are associated with carnitine acylcarnitine translocase deficiency, which can cause a variety of pathological conditions such as hypoglycemia, cardiac arrest, hepatomegaly, hepatic dysfunction and muscle weakness, and is usually lethal in new born and infants.		

— VALIDATION IMAGES —

Sample: Liver (Mouse) Lysate at 40 ug Primary:

Anti-SLC25A20 (bs-4192R) at 1/300 dilution

Secondary: IRDye800CW Goat Anti-Rabbit IgG at

1/20000 dilution Predicted band size: 33 kD

Observed band size: 33 kD