

**bs-15571R****[ Primary Antibody ]****IGFL2 Rabbit pAb****Bioss**  
**ANTIBODIES**

www.bioss.com.cn

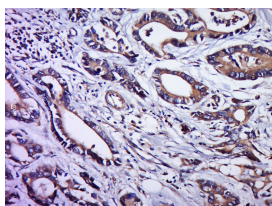
sales@bioss.com.cn

techsupport@bioss.com.cn

400-901-9800

**— DATASHEET —**

<b>Host:</b> Rabbit	<b>Isotype:</b> IgG	<b>Applications:</b> <b>IHC-P</b> (1:100-500)
<b>Clonality:</b> Polyclonal		<b>IHC-F</b> (1:100-500)
<b>GeneID:</b> 147920	<b>SWISS:</b> Q6UWQ7	<b>IF</b> (1:100-500)
<b>Target:</b> IGFL2		<b>Reactivity:</b> Human
<b>Immunogen:</b> KLH conjugated synthetic peptide derived from human IGFL2: 51-119/119.		
<b>Purification:</b> affinity purified by Protein A		<b>Predicted MW.:</b> 10 kDa
<b>Concentration:</b> 1mg/ml		<b>Subcellular Location:</b> Secreted
<b>Storage:</b> 0.01M TBS (pH7.4) with 1% BSA, 0.02% Proclin300 and 50% Glycerol. Shipped at 4°C. Store at -20°C for one year. Avoid repeated freeze/thaw cycles.		
<b>Background:</b> IGFL2 belongs to the insulin-like growth factor (IGF; see MIM 147440) family of signaling molecules that play critical roles in cellular energy metabolism and in growth and development, especially prenatal growth (Emtage et al., 2006 [PubMed 16890402]).		

**— VALIDATION IMAGES —**

Paraformaldehyde-fixed, paraffin embedded (Human stomach cancer); Antigen retrieval by boiling in sodium citrate buffer (pH6.0) for 15min; Block endogenous peroxidase by 3% hydrogen peroxide for 20 minutes; Blocking buffer (normal goat serum) at 37°C for 30min; Antibody incubation with (IGF like family member 2; IGFL2) Polyclonal Antibody, Unconjugated (bs-15571R) at 1:400 overnight at 4°C, followed by a conjugated secondary (sp-0023) for 20 minutes and DAB staining.