

bs-13808R

[Primary Antibody]

CCDC64 Rabbit pAb

Bioss
ANTIBODIES

www.bioss.com.cn

sales@bioss.com.cn

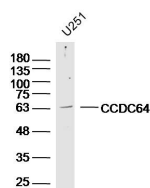
techsupport@bioss.com.cn

400-901-9800

— DATASHEET —

Host: Rabbit	Isotype: IgG	Applications: WB (1:500-2000)
Clonality: Polyclonal		Reactivity: Human (predicted: Mouse, Rat, Rabbit, Pig, Cow, Horse)
GeneID: 92558	SWISS: Q6ZP65	
Target: CCDC64		Predicted MW.: 65 kDa
Immunogen: KLH conjugated synthetic peptide derived from human CCDC64: 401-500/573.		Subcellular Location: Cytoplasm
Purification: affinity purified by Protein A		
Concentration: 1mg/ml		
Storage: 0.01M TBS (pH7.4) with 1% BSA, 0.02% Proclin300 and 50% Glycerol. Shipped at 4°C. Store at -20°C for one year. Avoid repeated freeze/thaw cycles.		
Background: Component of secretory vesicle machinery in developing neurons that acts as a regulator of neurite outgrowth. Regulates the secretory vesicle transport by controlling the accumulation of Rab6-containing secretory vesicles in the pericentrosomal region restricting anterograde secretory transport during the early phase of neuronal differentiation, thereby inhibiting neuritogenesis.		

— VALIDATION IMAGES —



Sample: U251(human) Cell Lysate at 40 ug
Primary: Anti-CCDC64 (bs-13808R) at 1/300
dilution Secondary: IRDye800CW Goat Anti-
Rabbit IgG at 1/20000 dilution Predicted band
size: 65 kD Observed band size: 63 kD