

bs-4185R**[Primary Antibody]****RelB Rabbit pAb****Bioss**
ANTIBODIES

www.bioss.com.cn

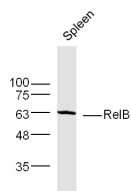
sales@bioss.com.cn

techsupport@bioss.com.cn

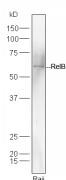
400-901-9800

— DATASHEET —**Host:** Rabbit**Isotype:** IgG**Clonality:** Polyclonal**GeneID:** 5971**SWISS:** Q01201**Target:** RelB**Immunogen:** KLH conjugated synthetic peptide derived from human RelB: 161-260/579.**Purification:** affinity purified by Protein A**Concentration:** 1mg/ml**Storage:** 0.01M TBS (pH7.4) with 1% BSA, 0.02% Proclin300 and 50% Glycerol.

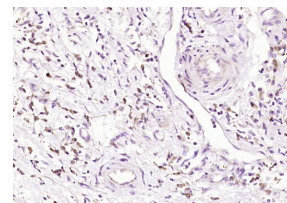
Shipped at 4°C. Store at -20°C for one year. Avoid repeated freeze/thaw cycles.

Background: The NFkB complex consists of NFkB1 or NFkB2 bound to REL, RELA, or RELB. The NFkB complex is inhibited by I kappa B proteins (NFKBIA, or NFKBIB), which inactivate NF kappa B by trapping it in the cytoplasm. Phosphorylation of serine residues on the I kappa B proteins by kinases (IKBKA, or IKBKB,) marks them for destruction via the ubiquitination pathway, thereby allowing activation of the NF kappa B complex.**Applications:** WB (1:500-2000)**IHC-P** (1:100-500)**IHC-F** (1:100-500)**IF** (1:100-500)**Flow-Cyt** (1:20-100)**Reactivity:** Human, Mouse
(predicted: Rat, Pig, Cow, Dog, Horse)**Predicted MW.:** 64 kDa**Subcellular Location:** Cytoplasm ,Nucleus**— VALIDATION IMAGES —**

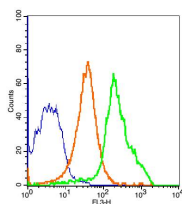
Sample: Spleen (Mouse) Lysate at 40 ug Primary:
Anti-RelB (bs-4185R) at 1/300 dilution
Secondary: IRDye800CW Goat Anti-Rabbit IgG at
1/20000 dilution Predicted band size: 64 kD
Observed band size: 64 kD



Sample: Raji Cell (Human) Lysate at 30 ug
Primary: Anti-RelB (bs-4185R) at 1/300 dilution
Secondary: IRDye800CW Goat Anti-Rabbit IgG at
1/20000 dilution Predicted band size: 64 kD
Observed band size: 64 kD



Paraformaldehyde-fixed, paraffin embedded (human colon carcinoma); Antigen retrieval by boiling in sodium citrate buffer (pH6.0) for 15min; Block endogenous peroxidase by 3% hydrogen peroxide for 20 minutes; Blocking buffer (normal goat serum) at 37°C for 30min; Antibody incubation with (RelB) Polyclonal Antibody, Unconjugated (bs-4185R) at 1:200 overnight at 4°C, followed by operating according to SP Kit(Rabbit) (sp-0023) instructions and DAB staining.



Sample: mouse blood primary antibody: Anti-RelB/PE-Cy5(bs-4185R-PE-Cy5).
concentration:1:20, 4°C incubate 30min.