

bs-4188R**[Primary Antibody]****SGPL1 Rabbit pAb****Bioss**
ANTIBODIES

www.bioss.com.cn

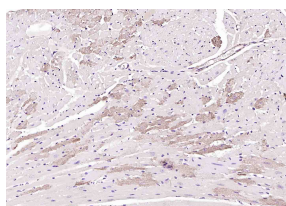
sales@bioss.com.cn

techsupport@bioss.com.cn

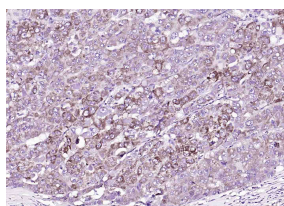
400-901-9800

DATASHEET

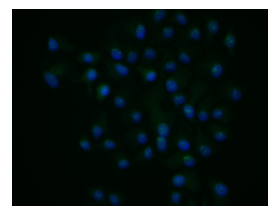
Host: Rabbit	Isotype: IgG	Applications: IHC-P (1:100-500) IHC-F (1:100-500) IF (1:100-500) Flow-Cyt (1ug/test) ICC/IF (1:100) Reactivity: Human, Mouse, Rat (predicted: Rabbit, Pig, Cow, Dog, Horse) Predicted MW.: 63 kDa Subcellular Location: Cytoplasm
Clonality: Polyclonal		
GeneID: 8879	SWISS: O95470	
Target: SGPL1		
Immunogen: KLH conjugated synthetic peptide derived from human SGPL1: 301-400/568.		
Purification: affinity purified by Protein A		
Concentration: 1mg/ml		
Storage: 0.01M TBS (pH7.4) with 1% BSA, 0.02% Proclin300 and 50% Glycerol. Shipped at 4°C. Store at -20°C for one year. Avoid repeated freeze/thaw cycles.		
Background: Cleaves phosphorylated sphingoid bases (PSBs), such as sphingosine-1-phosphate, into fatty aldehydes and phosphoethanolamine. Elevates stress-induced ceramide production and apoptosis.		

VALIDATION IMAGES

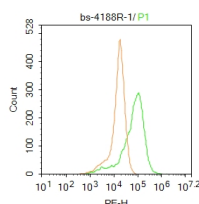
Paraformaldehyde-fixed, paraffin embedded (mouse heart); Antigen retrieval by boiling in sodium citrate buffer (pH6.0) for 15min; Block endogenous peroxidase by 3% hydrogen peroxide for 20 minutes; Blocking buffer (normal goat serum) at 37°C for 30min; Antibody incubation with (SGPL1) Polyclonal Antibody, Unconjugated (bs-4188R) at 1:200 overnight at 4°C, followed by operating according to SP Kit(Rabbit) (sp-0023) instructions and DAB staining.



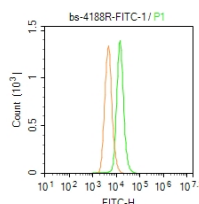
Paraformaldehyde-fixed, paraffin embedded (human liver carcinoma); Antigen retrieval by boiling in sodium citrate buffer (pH6.0) for 15min; Block endogenous peroxidase by 3% hydrogen peroxide for 20 minutes; Blocking buffer (normal goat serum) at 37°C for 30min; Antibody incubation with (SGPL1) Polyclonal Antibody, Unconjugated (bs-4188R) at 1:200 overnight at 4°C, followed by operating according to SP Kit(Rabbit) (sp-0023) instructions and DAB staining.



HepG2 cell; 4% Paraformaldehyde-fixed; Triton X-100 at room temperature for 20 min; Blocking buffer (normal goat serum, C-0005) at 37°C for 20 min; Antibody incubation with (SGPL1) polyclonal Antibody, Unconjugated (bs-4188R) 1:100, 90 minutes at 37°C; followed by a conjugated Goat Anti-Rabbit IgG antibody at 37°C for 90 minutes, DAPI (blue, C02-04002) was used to stain the cell nuclei.



Blank control: A549. Primary Antibody (green line): Rabbit Anti-SGPL1 antibody (bs-4188R) Dilution: 1μg /10⁶ cells; Isotype Control Antibody (orange line): Rabbit IgG. Secondary Antibody : Goat anti-rabbit IgG-PE Dilution: 1μg /test. Protocol The cells were fixed with 4% PFA (10min at room temperature) and then permeabilized with PBST for 20 min at room temperature. The cells were then incubated in 5%BSA to block non-specific protein-protein



Blank control: A549. Primary Antibody (green line): Rabbit Anti-SGPL1/FITC Conjugated antibody (bs-4188R-FITC) Dilution: 1μg /10⁶ cells; Isotype Control Antibody (orange line): Rabbit IgG-FITC. Protocol The cells were fixed with 4% PFA (10min at room temperature) and then permeabilized with 0.1% PBST for 20 min at -20°C. The cells were then incubated in 5% BSA to block non-specific protein-protein interactions for 30 min at room temperature.

Important Note: This product as supplied is intended for research use only, not for use in human, therapeutic or diagnostic applications.

interactions for 30 min at room temperature
.Cells stained with Primary Antibody for 30 min
at room temperature. The secondary antibody
used for 40 min at room temperature.
Acquisition of 20,000 events was performed.

The cells were stained with Primary Antibody for
30 min at room temperature. Acquisition of
20,000 events was performed.

— SELECTED CITATIONS —

- **[IF=11.47]** Choi, Won Hoon, et al. "Open-gate mutants of the mammalian proteasome show enhanced ubiquitin-conjugate degradation." *Nature Communications* 7 (2016). WB ;="Human". 26957043
- **[IF=5.853]** Mili Minaduola. et al. The circadian clock sets a spatial-temporal window for recent thymic emigrants. *IMMUNOL CELL BIOL.* 2022 Sep; IF ;Mouse. 36030488
- **[IF=3.687]** Lemos et al. Sphingosine-1-Phosphate Receptor 1 Is Involved in Non-Obese Diabetic Mouse Thymocyte Migration Disorders. (2018) *Int.J.Mol.Sci.* 19 FCM,IHC ;mouse. 29757216
- **[IF=4.005]** Karuppuchamy T et al. Sphingosine-1-Phosphate Lyase Inhibition Alters the S1P Gradient and Ameliorates Crohn's-Like Ileitis by Suppressing Thymocyte Maturation. *Inflamm Bowel Dis.* 2020 Jan 6;26(2):216-228. IHC ;Mouse. 31807751
- **[IF=2.25]** Zhang X et al. Quercetin ameliorates pulmonary fibrosis by inhibiting SphK1/S1P signaling. *Biochem Cell Biol.* 2018 Dec;96(6):742-751. WB ;Mouse&Human. 29940125