

**bs-15131R****[ Primary Antibody ]****C22orf13 Rabbit pAb****BioSS**  
**ANTIBODIES**

www.bioss.com.cn

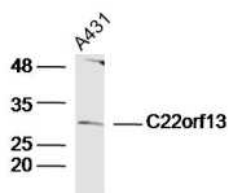
sales@bioss.com.cn

techsupport@bioss.com.cn

400-901-9800

**— DATASHEET —**

<b>Host:</b> Rabbit	<b>Isotype:</b> IgG	<b>Applications:</b> WB (1:500-2000)
<b>Clonality:</b> Polyclonal		<b>Reactivity:</b> Human (predicted: Mouse, Rat, Dog, Horse)
<b>GeneID:</b> 83606	<b>SWISS:</b> Q96NT3	
<b>Target:</b> C22orf13		<b>Predicted MW.:</b> 27 kDa
<b>Immunogen:</b> KLH conjugated synthetic peptide derived from human C22orf13: 51-150/240.		<b>Subcellular Location:</b> Nucleus
<b>Purification:</b> affinity purified by Protein A		
<b>Concentration:</b> 1mg/ml		
<b>Storage:</b> 0.01M TBS (pH7.4) with 1% BSA, 0.02% Proclin300 and 50% Glycerol. Shipped at 4°C. Store at -20°C for one year. Avoid repeated freeze/thaw cycles.		
<b>Background:</b> Chromosome 22 contains over 500 genes and about 49 million bases. Being the second smallest human chromosome, 22 contains a surprising variety of interesting genes. Phelan-McDermid syndrome, Neurofibromatosis type 2 and autism are associated with chromosome 22. A schizophrenia susceptibility locus has been identified on chromosome 22 and studies show that 22q11 deletion symptoms include a high incidence of schizophrenia. Translocations between chromosomes 9 and 22 may lead to the formation of the Philadelphia Chromosome and the subsequent production of the novel fusion protein, BCR-Abl, a potent cell proliferation activator found in several types of leukemia. The C22orf13 gene product has been provisionally designated C22orf13 pending further characterization.		

**— VALIDATION IMAGES —**

Sample: A431 Cell(Human)Lysate at 30 ug  
Primary: Anti- C22orf13 (bs-15131R)at 1/300  
dilution Secondary: IRDye800CW Goat Anti-  
Rabbit IgG at 1/20000 dilution Predicted band  
size: 27kD Observed band size: 27kD