

**bs-13806R****[ Primary Antibody ]****TAP26/CCDC59 Rabbit pAb****Bioss**  
ANTIBODIES

www.bioss.com.cn

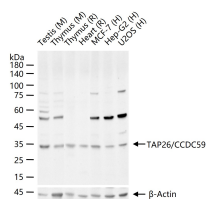
sales@bioss.com.cn

techsupport@bioss.com.cn

400-901-9800

**— DATASHEET —**

<b>Host:</b> Rabbit	<b>Isotype:</b> IgG	<b>Applications:</b> WB (1:500-2000)
<b>Clonality:</b> Polyclonal		<b>Reactivity:</b> Human, Mouse, Rat (predicted: Rabbit, Pig, Sheep, Cow, Horse)
<b>GeneID:</b> 29080	<b>SWISS:</b> Q9P031	
<b>Target:</b> TAP26/CCDC59		<b>Predicted MW.:</b> 29 kDa
<b>Immunogen:</b> KLH conjugated synthetic peptide derived from human TAP26/CCDC59: 101-200/241.		<b>Subcellular Location:</b> Nucleus
<b>Purification:</b> affinity purified by Protein A		
<b>Concentration:</b> 1mg/ml		
<b>Storage:</b> 0.01M TBS (pH7.4) with 1% BSA, 0.02% Proclin300 and 50% Glycerol. Shipped at 4°C. Store at -20°C for one year. Avoid repeated freeze/thaw cycles.		

**— VALIDATION IMAGES —**

25 ug total protein per lane of various lysates  
(see on figure) probed with TAP26/CCDC59  
polyclonal antibody, unconjugated (bs-13806R)  
at 1:1000 dilution and 4°C overnight incubation.  
Followed by conjugated secondary antibody  
incubation at r.t. for 60 min.