

bs-10090R**[Primary Antibody]****BMP6 Rabbit pAb****Bioss**
ANTIBODIES

www.bioss.com.cn

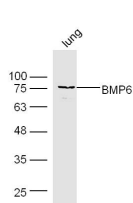
sales@bioss.com.cn

techsupport@bioss.com.cn

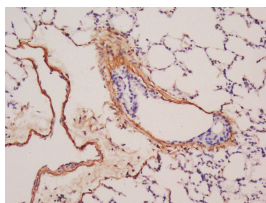
400-901-9800

— DATASHEET —

Host: Rabbit	Isotype: IgG	Applications: WB (1:500-2000)
Clonality: Polyclonal		IHC-P (1:100-500)
GeneID: 654	SWISS: P22004	IHC-F (1:100-500)
Target: BMP6		IF (1:100-500)
Immunogen: KLH conjugated synthetic peptide derived from human BMP6: 421-513/513.		Reactivity: Human, Mouse (predicted: Rat, Pig, Sheep, Cow, Chicken, Dog, Horse)
Purification: affinity purified by Protein A		
Concentration: 1mg/ml		Predicted MW.: 16/56 kDa
Storage: 0.01M TBS (pH7.4) with 1% BSA, 0.02% Proclin300 and 50% Glycerol. Shipped at 4°C. Store at -20°C for one year. Avoid repeated freeze/thaw cycles.		Subcellular Location: Secreted
Background: This gene encodes a secreted ligand of the TGF-beta (transforming growth factor-beta) superfamily of proteins. Ligands of this family bind various TGF-beta receptors leading to recruitment and activation of SMAD family transcription factors that regulate gene expression. The encoded preproprotein is proteolytically processed to generate each subunit of the disulfide-linked homodimer. This protein regulates a wide range of biological processes including iron homeostasis, fat and bone development, and ovulation. Differential expression of this gene may be associated with progression of breast and prostate cancer. Mutations in this gene may be associated with iron overload in human patients. [provided by RefSeq, Jul 2016]		

— VALIDATION IMAGES —

Sample: Lung (Mouse) Lysate at 40 ug Primary:
Anti-BMP6 (bs-10090R) at 1/300 dilution
Secondary: IRDye800CW Goat Anti-Rabbit IgG at
1/20000 dilution Predicted band size: 16/56 kD
Observed band size: 76 kD



Tissue/cell: mouse lung tissue; 4%
Paraformaldehyde-fixed and paraffin-
embedded; Antigen retrieval: citrate buffer (
0.01M, pH 6.0), Boiling bathing for 15min; Block
endogenous peroxidase by 3% Hydrogen
peroxide for 30min; Blocking buffer (normal goat
serum,C-0005) at 37°C for 20 min; Incubation:
Anti-BMP6 Polyclonal Antibody,
Unconjugated(bs-10090R) 1:200, overnight at
4°C, followed by conjugation to the secondary
antibody(SP-0023) and DAB(C-0010) staining

— SELECTED CITATIONS —

- **[IF=7.6]** Qin-Yao Zhang. et al. Inulin alleviates GenX-induced intestinal injury in mice by modulating the MAPK pathway, cell cycle, and cell adhesion proteins. ENVIRON POLLUT. 2024 Dec;362:124974 WB ;Mouse. 39332800
- **[IF=7.4]** Zhou Lijie. et al. Metabolic reprogramming based on RNA sequencing of gemcitabine-resistant cells reveals the FASN gene as a therapeutic for bladder cancer. J TRANSL MED. 2024 Dec;22(1):1-21 IHC,IF ;Human. 38218866

Important Note: This product as supplied is intended for research use only, not for use in human, therapeutic or diagnostic applications.

- **[IF=6.831]** Hyun-Yi Kim. et al. Runx3 regulates iron metabolism via modulation of BMP signalling. 2021 Oct 06 IHC ;Mouse. 34611951
- **[IF=3.688]** Jianshu Lv. et al. Regulatory role of dihydrotestosterone on BMP-6 receptors in granular cells of sheep antral follicles. Gene. 2021 Nov;;146066 WB,IF,IHC ;Sheep. 34838638
- **[IF=2.923]** Lei Wang. et al. BMP6 regulates AMH expression via SMAD1/5/8 in goat ovarian granulosa cells. THERIOGENOLOGY. 2022 Nov;; IHC ;Goat. 36525856