

CD62P Rabbit pAb

Catalog Number: bs-8620R

Target Protein: CD62P

Concentration: 1mg/ml

Form: Liquid

Host: Rabbit

Clonality: Polyclonal

Isotype: IgG

Applications: WB (1:500-2000)

Reactivity: Human

Predicted MW: 86 kDa

Detected MW: 140/90 kDa

Entrez Gene: 6403

Swiss Prot: P16109

Source: KLH conjugated synthetic peptide derived from human sp-selectin: 501-600/830.

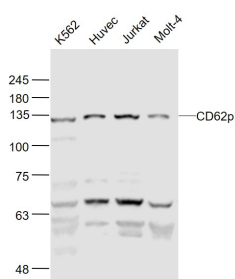
Purification: affinity purified by Protein A

Storage: 0.01M TBS (pH7.4) with 1% BSA, 0.02% Proclin300 and 50% Glycerol.

Shipped at 4°C. Store at -20°C for one year. Avoid repeated freeze/thaw cycles.

Background: This gene encodes a 140 kDa protein that is stored in the alpha-granules of platelets and Weibel-Palade bodies of endothelial cells. This protein redistributes to the plasma membrane during platelet activation and degranulation and mediates the interaction of activated endothelial cells or platelets with leukocytes. The membrane protein is a calcium-dependent receptor that binds to sialylated forms of Lewis blood group carbohydrate antigens on neutrophils and monocytes. Alternative splice variants may occur but are not well documented. [provided by RefSeq, Jul 2008]

VALIDATION IMAGES



Sample: K562(Human) Cell Lysate at 30 ug HUvec(Human) Cell Lysate at 30 ug Jurkat(Human) Cell Lysate at 30 ug Molt-4(Human) Cell Lysate at 30 ug Primary: Anti-CD62p (bs-8620R) at 1/1000 dilution Secondary: IRDye800CW Goat Anti-Rabbit IgG at 1/20000 dilution Predicted band size: 140'90 kD Observed band size: 130 kD