

**bs-13792R****[ Primary Antibody ]****BioSS**  
ANTIBODIES

www.bioss.com.cn

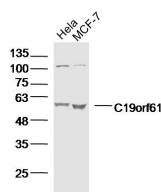
sales@bioss.com.cn

techsupport@bioss.com.cn

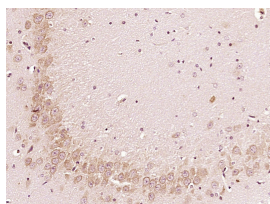
400-901-9800

**C19orf61 Rabbit pAb****— DATASHEET —**

<b>Host:</b> Rabbit	<b>Isotype:</b> IgG	<b>Applications:</b> <b>WB</b> (1:500-2000)
<b>Clonality:</b> Polyclonal		<b>IHC-P</b> (1:100-500)
<b>GeneID:</b> 56006	<b>SWISS:</b> Q9H0W8	<b>IHC-F</b> (1:100-500)
<b>Target:</b> C19orf61		<b>IF</b> (1:100-500)
<b>Immunogen:</b> KLH conjugated synthetic peptide derived from human C19orf61: 451-520/520.		<b>Reactivity:</b> Human, Rat (predicted: Mouse, Rabbit, Pig, Sheep, Cow, Dog, Horse)
<b>Purification:</b> affinity purified by Protein A		<b>Predicted MW.:</b> 58 kDa
<b>Concentration:</b> 1mg/ml		<b>Subcellular Location:</b> Cytoplasm
<b>Storage:</b> 0.01M TBS (pH7.4) with 1% BSA, 0.02% Proclin300 and 50% Glycerol. Shipped at 4°C. Store at -20°C for one year. Avoid repeated freeze/thaw cycles.		
<b>Background:</b> Involved in nonsense-mediated decay (NMD) of mRNAs containing premature stop codons. Is recruited by release factors to stalled ribosomes together with SMG1 and SMG8 (forming the SMG1C protein kinase complex) and, in the SMG1C complex, is required for the efficient association between SMG1 and SMG8.		

**— VALIDATION IMAGES —**

Sample: Hela Cell Lysate at 40 ug MCF-7 Cell Lysate at 40 ug  
Primary: Anti-C19orf61 (bs-13792R) at 1/300 dilution  
Secondary: IRDye800CW Goat Anti-Rabbit IgG at 1/20000 dilution  
Predicted band size: 58 kD Observed band size: 58 kD



Paraformaldehyde-fixed, paraffin embedded (Rat brain); Antigen retrieval by boiling in sodium citrate buffer (pH6.0) for 15min; Block endogenous peroxidase by 3% hydrogen peroxide for 20 minutes; Blocking buffer (normal goat serum) at 37°C for 30min; Antibody incubation with (C19orf61) Polyclonal Antibody, Unconjugated (bs-13792R) at 1:400 overnight at 4°C, followed by operating according to SP Kit(Rabbit) (sp-0023) instructions and DAB staining.