

bs-15968R**[Primary Antibody]****phospho-alpha Adducin (Ser436) Rabbit pAb****Bioss**
ANTIBODIES

www.bioss.com.cn

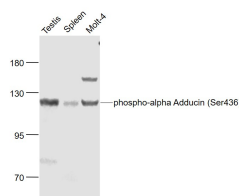
sales@bioss.com.cn

techsupport@bioss.com.cn

400-901-9800

DATASHEET

Host: Rabbit	Isotype: IgG	Applications: WB (1:500-2000)
Clonality: Polyclonal		Reactivity: Human, Mouse (predicted: Rat, Cow, Chicken, Dog, Horse)
GeneID: 118	SWISS: P35611	Predicted MW.: 81 kDa
Target: alpha Adducin (Ser436)		Subcellular Location: Cell membrane ,Cytoplasm
Immunogen: KLH conjugated synthesised phosphopeptide derived from human alpha Adducin around the phosphorylation site of Ser436: RH(p-S)FQ.		
Purification: affinity purified by Protein A		
Concentration: 1mg/ml		
Storage: 0.01M TBS (pH7.4) with 1% BSA, 0.02% Proclin300 and 50% Glycerol. Shipped at 4°C. Store at -20°C for one year. Avoid repeated freeze/thaw cycles.		
Background: Adducins are a family of cytoskeleton proteins encoded by three genes (Alpha, Beta, Gamma). Adducin is a protein associated with the inner leaflet of the plasma membrane and is one of the proteins localized at the spectrin-actin junction of the membrane skeleton. The cortical actin cytoskeletal network is lost during apoptosis and Adducins are central in the cortical actin network organization. Adducin Alpha is a cytoskeletal protein involved with sodium-pump activity in the renal tubule and is associated with hypertension. The expression of Adducin Alpha and Adducin Gamma is ubiquitous in contrast to the restricted expression of Adducin Beta. Adducin Beta is expressed at high levels in brain and hematopoietic tissues, such as bone marrow, in humans, and in spleen in mice.		

VALIDATION IMAGES

Sample: Testis (Mouse) Lysate at 40 ug Spleen
(Mouse) Lysate at 40 ug Molt-4(Human) Cell
Lysate at 30 ug Primary: Anti- phospho-alpha
Adducin (Ser436) (bs-15968R) at 1/1000 dilution
Secondary: IRDye800CW Goat Anti-Rabbit IgG at
1/20000 dilution Predicted band size: 120 kD
Observed band size: 120 kD