

**bs-15038R****[ Primary Antibody ]****Bioss**  
**ANTIBODIES**

www.bioss.com.cn

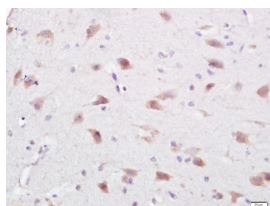
sales@bioss.com.cn

techsupport@bioss.com.cn

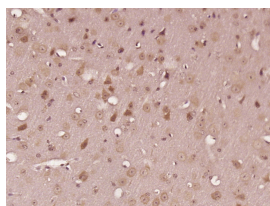
400-901-9800

**C1orf173 Rabbit pAb****— DATASHEET —**

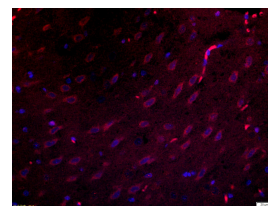
<b>Host:</b> Rabbit	<b>Isotype:</b> IgG	<b>Applications:</b> IHC-P (1:100-500)
<b>Clonality:</b> Polyclonal		<b>IHC-F</b> (1:100-500)
<b>GeneID:</b> 127254	<b>SWISS:</b> Q5RHP9	<b>IF</b> (1:100-500)
<b>Target:</b> C1orf173		<b>Reactivity:</b> Human, Mouse, Rat (predicted: Rabbit, Pig, Horse)
<b>Immunogen:</b> KLH conjugated synthetic peptide derived from human C1orf173 : 301-400/1530.		<b>Predicted MW.:</b> 168 kDa
<b>Purification:</b> affinity purified by Protein A		<b>Subcellular Location:</b> Cytoplasm ,Nucleus
<b>Concentration:</b> 1mg/ml		
<b>Storage:</b> 0.01M TBS (pH7.4) with 1% BSA, 0.02% Proclin300 and 50% Glycerol. Shipped at 4°C. Store at -20°C for one year. Avoid repeated freeze/thaw cycles.		
<b>Background:</b> Chromosome 1 is the largest human chromosome spanning about 260 million base pairs and making up 8% of the human genome. There are about 3,000 genes on chromosome 1, and considering the great number of genes there are also a large number of diseases associated with chromosome 1. Notably, the rare aging disease Hutchinson-Gilford progeria is associated with the LMNA gene which encodes lamin A. When defective, the LMNA gene product can build up in the nucleus and cause characteristic nuclear blebs. The mechanism of rapidly enhanced aging is unclear and is a topic of continuing exploration. The MUTYH gene is located on chromosome 1 and is partially responsible for familial adenomatous polyposis. Stickler syndrome, Parkinsons, Gaucher disease and Usher syndrome are also associated with chromosome 1. A breakpoint has been identified in 1q which disrupts the DISC1 gene and is linked to schizophrenia. Aberrations in chromosome 1 are found in a variety of cancers including head and neck cancer, malignant melanoma and multiple myeloma. The C1orf173 gene product has been provisionally designated C1orf173 pending further characterization. There are three isoforms of C1orf173 that are produced as a result of alternative splicing events.		

**— VALIDATION IMAGES —**

Tissue/cell: rat brain tissue; 4% Paraformaldehyde-fixed and paraffin-embedded; Antigen retrieval: citrate buffer (0.01M, pH 6.0), Boiling bathing for 15min; Block endogenous peroxidase by 3% Hydrogen peroxide for 30min; Blocking buffer (normal goat serum, C-0005) at 37°C for 20 min; Incubation: Anti-C1orf173 Polyclonal Antibody, Unconjugated(bs-15038R) 1:500, overnight at 4°C, followed by conjugation to the secondary antibody(SP-0023) and DAB(C-0010) staining



Paraformaldehyde-fixed, paraffin embedded (Mouse brain); Antigen retrieval by boiling in sodium citrate buffer (pH6.0) for 15min; Block endogenous peroxidase by 3% hydrogen peroxide for 20 minutes; Blocking buffer (normal goat serum) at 37°C for 30min; Antibody incubation with (C1orf173) Polyclonal Antibody, Unconjugated (bs-15038R) at 1:400 overnight at 4°C, followed by operating according to SP Kit(Rabbit) (sp-0023) instructions and DAB staining.



Tissue/cell: rat brain tissue; 4% Paraformaldehyde-fixed and paraffin-embedded; Antigen retrieval: citrate buffer (0.01M, pH 6.0), Boiling bathing for 15min; Blocking buffer (normal goat serum, C-0005) at 37°C for 20 min; Incubation: Anti- C1orf173 Polyclonal Antibody, Unconjugated(bs-15038R) 1:200, overnight at 4°C; The secondary antibody was Goat Anti-Rabbit IgG, Cy3 conjugated(bs-0295G-Cy3) used at 1:200 dilution for 40 minutes at 37°C. DAPI(5ug/ml, blue, C-0033) was used to stain the cell nuclei