

bs-0209R**[Primary Antibody]****Bioss**
ANTIBODIES

www.bioss.com.cn

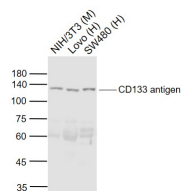
sales@bioss.com.cn

techsupport@bioss.com.cn

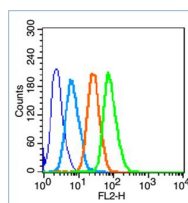
400-901-9800

CD133 Rabbit pAb**— DATASHEET —**

Host: Rabbit	Isotype: IgG	Applications: WB (1:500-2000) Flow-Cyt (1µg/Test)
Clonality: Polyclonal		Reactivity: Human, Mouse (predicted: Rat, Fruit Fly)
GeneID: 8842	SWISS: Q43490	
Target: CD133		Predicted MW.: 95 kDa
Immunogen: KLH conjugated synthetic peptide derived from human CD133: 836-880/865. < Cytoplasmic >		Subcellular Location: Cell membrane
Purification: affinity purified by Protein A		
Concentration: 1mg/ml		
Storage: 0.01M TBS (pH7.4) with 1% BSA, 0.02% Proclin300 and 50% Glycerol. Shipped at 4°C. Store at -20°C for one year. Avoid repeated freeze/thaw cycles.		
Background: This gene encodes a pentaspan transmembrane glycoprotein. The protein localizes to membrane protrusions and is often expressed on adult stem cells, where it is thought to function in maintaining stem cell properties by suppressing differentiation. Mutations in this gene have been shown to result in retinitis pigmentosa and Stargardt disease. Expression of this gene is also associated with several types of cancer. This gene is expressed from at least five alternative promoters that are expressed in a tissue-dependent manner. Multiple transcript variants encoding different isoforms have been found for this gene. [provided by RefSeq, Mar 2009]		

— VALIDATION IMAGES —

Sample: Lane 1: NIH/3T3 (Mouse) Cell Lysate at 30 ug
 Lane 2: Lovo (Human) Cell Lysate at 30 ug
 Lane 3: SW480 (Human) Cell Lysate at 30 ug
 Primary: Anti-CD133 antigen (bs-0209R) at 1/300 dilution
 Secondary: IRDye800CW Goat Anti-Rabbit IgG at 1/20000 dilution
 Predicted band size: 110 kD
 Observed band size: 120 kD



Blank control (blue line): Hep G2(fixed with 70% ethanol Overnight at 4°C. Cells stained with Primary Antibody for 30 min at room temperature). Primary Antibody (green line): Rabbit Anti-CD133 antibody (bs-0209R), Dilution: 1µg /10⁶ cells; Isotype Control Antibody (orange line): Rabbit IgG. Secondary Antibody (white blue line): Goat anti-rabbit IgG-PE, Dilution: 1µg /test.

— SELECTED CITATIONS —

- **[IF=7.419]** Shangfu Xu. et al. The role of calcium-sensing receptor in ginsenoside Rg1 promoting reendothelialization to inhibit intimal hyperplasia after balloon injury. BIOMED PHARMACOTHER. 2023 Jul;163:114843 FCM,IF ;Rat. 37201261
- **[IF=5.7]** Jinmiao Tian. et al. QPH-FR: A Novel Quinoa Peptide Enhances Chemosensitivity by Targeting Leucine-Rich Repeat-Containing G Protein-Coupled Receptor 5 in Colorectal Cancer. J AGR FOOD CHEM. 2024;XXXX(XXX):XXX-XXX IHC,WB ;Mouse,Human. 39047262
- **[IF=2.766]** Bhagwani AR et al. Endothelial cells are a source of Nestin expression in Pulmonary Arterial Hypertension. PLoS One. 2019 Mar 18;14(3):e0213890. FCM ;Rat. 30883593

Important Note: This product as supplied is intended for research use only, not for use in human, therapeutic or diagnostic applications.