

**bs-1720R****[ Primary Antibody ]****gamma catenin Rabbit pAb****BioSS**  
**ANTIBODIES**

www.bioss.com.cn

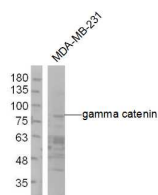
sales@bioss.com.cn

techsupport@bioss.com.cn

400-901-9800

**— DATASHEET —**

<b>Host:</b> Rabbit <b>Clonality:</b> Polyclonal <b>GeneID:</b> 3728 <b>Target:</b> gamma catenin <b>Immunogen:</b> KLH conjugated synthetic peptide derived from human Catenin gamma: 601-700/745. <b>Purification:</b> affinity purified by Protein A <b>Concentration:</b> 1mg/ml <b>Storage:</b> 0.01M TBS (pH7.4) with 1% BSA, 0.02% Proclin300 and 50% Glycerol. Shipped at 4°C. Store at -20°C for one year. Avoid repeated freeze/thaw cycles. <b>Background:</b> This gene encodes a major cytoplasmic protein which is the only known constituent common to submembranous plaques of both desmosomes and intermediate junctions. This protein forms distinct complexes with cadherins and desmosomal cadherins and is a member of the catenin family since it contains a distinct repeating amino acid motif called the armadillo repeat. Mutation in this gene has been associated with Naxos disease. Alternative splicing occurs in this gene; however, not all transcripts have been fully described. [provided by RefSeq].	<b>Isotype:</b> IgG  <b>SWISS:</b> P14923	<b>Applications:</b> WB (1:500-2000)  <b>Reactivity:</b> Human (predicted: Mouse, Rat, Rabbit, Pig, Cow, Dog, Horse)  <b>Predicted MW.:</b> 82 kDa  <b>Subcellular Location:</b> Cell membrane ,Cytoplasm
--	---	---

**— VALIDATION IMAGES —**

Sample: MDA-MB-231(Human) Cell Lysate at 30 ug  
Primary: Anti-gamma catenin (bs-1720R ) at 1/300 dilution  
Secondary: IRDye800CW Goat Anti-Rabbit IgG at 1/20000 dilution  
Predicted band size: 82 kD  
Observed band size: 82 kD