

LHB Rabbit pAb

Catalog Number: bs-0952R

Target Protein: LHB

Concentration: 1mg/ml

Form: Liquid

Host: Rabbit

Clonality: Polyclonal

Isotype: IgG

Applications: WB (1:500-2000)

Reactivity: Human

Predicted MW: 16 kDa

Entrez Gene: 3972

Swiss Prot: P01229

Source: KLH conjugated synthetic peptide derived from human LH: 101-141/141.

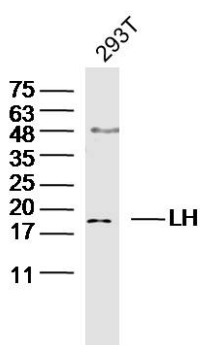
Purification: affinity purified by Protein A

Storage: 0.01M TBS (pH7.4) with 1% BSA, 0.02% Proclin300 and 50% Glycerol.

Shipped at 4°C. Store at -20°C for one year. Avoid repeated freeze/thaw cycles.

Background: Luteinizing Hormone is a member of the glycoprotein hormone family. Glycoprotein hormones are heterodimers consisting of a common alpha subunit and an unique beta subunit which confers biological specificity. LH is expressed in the pituitary gland and promotes spermatogenesis and ovulation by stimulating the testes and ovaries to synthesize steroids. Mutations in the Luteinizing Hormone (LHB) gene are associated with hypogonadism which is characterized by infertility and pseudohermaphroditism.

VALIDATION IMAGES



Sample: 293T (Human) Cell Lysate at 30 ug Primary: Anti-CD200R (bs-7351R) at 1/300 dilution Secondary: IRDye800CW Goat Anti-Rabbit IgG at 1/20000 dilution Predicted band size: 16 kD Observed band size: 19 kD

PRODUCT SPECIFIC PUBLICATIONS

[IF=3.191] Zheng J et al. Pituitary Transcriptomic Study Reveals the Differential Regulation of lncRNAs and mRNAs Related to Prolificacy in Different FecB Genotyping Sheep. Genes (Basel). 2019 Feb 18;10(2). IF ; Sheep . 30781725