

**bs-1488R****[ Primary Antibody ]**

**Bioss**  
ANTIBODIES

www.bioss.com.cn

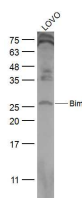
sales@bioss.com.cn

techsupport@bioss.com.cn

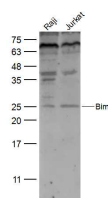
400-901-9800

**Bim Rabbit pAb****— DATASHEET —**

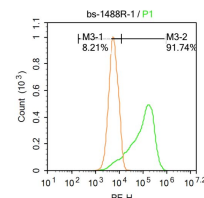
<b>Host:</b> Rabbit <b>Clonality:</b> Polyclonal <b>GeneID:</b> 10018 <b>Target:</b> Bim <b>Immunogen:</b> KLH conjugated synthetic peptide derived from the middle of human Bim: 51-150/198. <b>Purification:</b> affinity purified by Protein A <b>Concentration:</b> 1mg/ml <b>Storage:</b> 0.01M TBS (pH7.4) with 1% BSA, 0.02% Proclin300 and 50% Glycerol. Shipped at 4°C. Store at -20°C for one year. Avoid repeated freeze/thaw cycles. <b>Background:</b> Bim, Bcl-2 interacting mediator of cell death, is a pro-apoptotic protein belonging to the Bcl2 family of proteins containing a Bcl2 homology domain 3 (BH3). It is proapoptotic and exerts its effects by interacting with prosurvival members of the Bcl2 family like Bcl2, BclxL and Bclw. Bim is sequestered in an inactive conformation through binding to the microtubule-associated dynein motor complex. Certain apoptotic stimuli release Bim from microtubules, allowing inhibitory binding to anti-apoptotic Bcl-2 family members and subsequent initiation of apoptosis.	<b>Isotype:</b> IgG <b>SWISS:</b> O43521	<b>Applications:</b> <b>WB</b> (1:500-2000) <b>Flow-Cyt</b> (1ug/test)  <b>Reactivity:</b> Human, Rat (predicted: Mouse, Pig, Sheep, Cow, Dog, Horse)  <b>Predicted MW.:</b> 22 kDa  <b>Subcellular Location:</b> Cell membrane ,Cytoplasm
---	---	--

**— VALIDATION IMAGES —**

Sample: LOVO(Human) Cell Lysate at 30 ug  
 Primary: Anti-Bim (bs-1488R) at 1/500 dilution  
 Secondary: IRDye800CW Goat Anti-Rabbit IgG at 1/20000 dilution Predicted band size: 22 kD  
 Observed band size: 25 kD



Sample: Raji(Human) Cell Lysate at 30 ug  
 Jurkat(Human) Cell Lysate at 30 ug Primary:  
 Anti-Bim (bs-1488R) at 1/500 dilution Secondary:  
 IRDye800CW Goat Anti-Rabbit IgG at 1/20000 dilution Predicted band size: 22 kD Observed band size: 25 kD



Blank control: Raji. Primary Antibody (green line): Rabbit Anti-Bim antibody (bs-1488R)  
 Dilution: 1µg /10<sup>6</sup> cells; Isotype Control Antibody (orange line): Rabbit IgG . Secondary Antibody : Goat anti-rabbit IgG-PE Dilution: 1µg /test. Protocol The cells were fixed with 4% PFA (10min at room temperature)and then permeabilized with PBST for 20 min at room temperature. The cells were then incubated in 5%BSA to block non-specific protein-protein interactions for 30 min at at room temperature .Cells stained with Primary Antibody for 30 min at room temperature. The secondary antibody used for 40 min at room temperature. Acquisition of 20,000 events was performed.

**— SELECTED CITATIONS —**

- **[IF=6.551]** Wei J et al. Endosulfan induces cardiotoxicity through apoptosis via unbalance of pro-survival and mitochondrial-mediated apoptotic pathways. Sci Total Environ . 2020 Jul 20;727:138790. WB ;human. 32344260
- **[IF=4.486]** Yuanhui Zhu. et al. 1-Methyl-4-phenyl-1,2,3,6-tetrahydropyridine Induced Parkinson' s Disease in Mouse: Potential Association between Neurotransmitter Disturbance and Gut Microbiota Dysbiosis. Acs Chem Neurosci.

Important Note: This product as supplied is intended for research use only, not for use in human, therapeutic or diagnostic applications.

2020;11(20):3366–3376 WB ;Mouse. 32926778

- **[IF=2.154]** Shen S et al. Transcription factor early growth response-1 plays an oncogenic role in salivary gland pleomorphic adenoma. Biotechnol Lett. 2019 Nov 30. WB ;Mouse. 31786685