

**bs-0976R****[ Primary Antibody ]****LPLUNC1 Rabbit pAb****BioSS**  
**ANTIBODIES**

www.bioss.com.cn

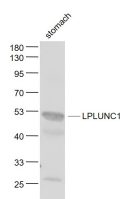
sales@bioss.com.cn

techsupport@bioss.com.cn

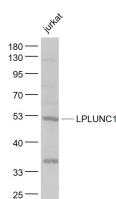
400-901-9800

**— DATASHEET —**

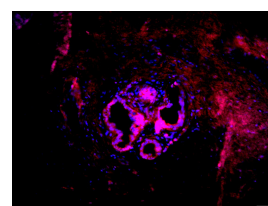
<b>Host:</b> Rabbit	<b>Isotype:</b> IgG	<b>Applications:</b> <b>WB</b> (1:500-2000)
<b>Clonality:</b> Polyclonal		<b>IHC-P</b> (1:100-500)
<b>GeneID:</b> 92747	<b>SWISS:</b> Q8TDL5	<b>IHC-F</b> (1:100-500)
<b>Target:</b> LPLUNC1		<b>IF</b> (1:100-500)
<b>Immunogen:</b> KLH conjugated synthetic peptide derived from human LPLUNC1: 21-120/484.		<b>Reactivity:</b> Human, Mouse, Rat
<b>Purification:</b> affinity purified by Protein A		
<b>Concentration:</b> 1mg/ml		<b>Predicted MW.:</b> 50 kDa
<b>Storage:</b> 0.01M TBS (pH7.4) with 1% BSA, 0.02% Proclin300 and 50% Glycerol. Shipped at 4°C. Store at -20°C for one year. Avoid repeated freeze/thaw cycles.		<b>Subcellular Location:</b> Secreted
<b>Background:</b> The protein encoded by this gene may be involved in the innate immune response to bacterial exposure in the mouth, nasal cavities, and lungs. The encoded protein is secreted and is a member of the BPI/LBP/PLUNC protein superfamily. This gene is found with other members of the superfamily in a cluster on chromosome 20. [provided by RefSeq]		

**— VALIDATION IMAGES —**

Sample: Stomach (Mouse) Lysate at 40 ug  
 Primary: Anti- LPLUNC1 (bs-0976R) at 1/1000  
 dilution Secondary: IRDye800CW Goat Anti-  
 Rabbit IgG at 1/20000 dilution Predicted band  
 size: 50 kD Observed band size: 50 kD



Sample: Jurkat(Human) Cell Lysate at 30 ug  
 Primary: Anti- LPLUNC1 (bs-0976R) at 1/1000  
 dilution Secondary: IRDye800CW Goat Anti-  
 Rabbit IgG at 1/20000 dilution Predicted band  
 size: 50 kD Observed band size: 50 kD



Tissue/cell: human Nasal polyps tissue;4%  
 Paraformaldehyde-fixed and paraffin-  
 embedded; Antigen retrieval: citrate buffer ( 0.01M, pH 6.0 ), Boiling bathing for 15min;  
 Blocking buffer (normal goat serum,C-0005) at 37°C for 20 min; Incubation: Anti-LPLUNC1 Polyclonal Antibody, Unconjugated(bs-0976R) 1:200, overnight at 4°C; The secondary antibody was Goat Anti-Rabbit IgG, Cy3 conjugated (bs-0295G-Cy3)used at 1:200 dilution for 40 minutes at 37°C. DAPI(5ug/ml,blue,C-0033) was used to stain the cell nuclei