

**bs-1457R****[ Primary Antibody ]****GM-CSFR alpha Rabbit pAb****BioSS**  
**ANTIBODIES**

www.bioss.com.cn

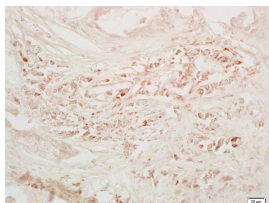
sales@bioss.com.cn

techsupport@bioss.com.cn

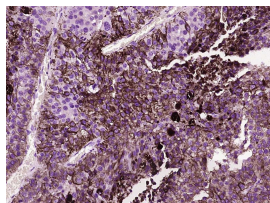
400-901-9800

**— DATASHEET —**

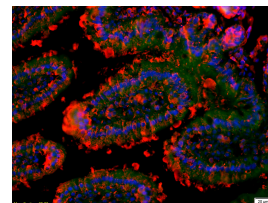
<b>Host:</b> Rabbit <b>Clonality:</b> Polyclonal <b>GeneID:</b> 12982 <b>Target:</b> GM-CSFR alpha <b>Immunogen:</b> KLH conjugated synthetic peptide derived from mouse GM-CSFR alpha: 101-230/388. <b>Purification:</b> affinity purified by Protein A <b>Concentration:</b> 1mg/ml <b>Storage:</b> 0.01M TBS (pH7.4) with 1% BSA, 0.02% Proclin300 and 50% Glycerol. Shipped at 4°C. Store at -20°C for one year. Avoid repeated freeze/thaw cycles. <b>Background:</b> The protein encoded by this gene is the alpha subunit of the heterodimeric receptor for colony stimulating factor 2, a cytokine which controls the production, differentiation, and function of granulocytes and macrophages. The encoded protein is a member of the cytokine family of receptors. This gene is found in the pseudoautosomal region (PAR) of the X and Y chromosomes. Multiple transcript variants encoding different isoforms have been found for this gene, with some of the isoforms being membrane-bound and others being soluble. [provided by RefSeq].	<b>Isotype:</b> IgG <b>SWISS:</b> Q00941	<b>Applications:</b> IHC-P (1:100-500) IHC-F (1:100-500) IF (1:100-500) <b>Reactivity:</b> Human, Mouse (predicted: Rat) <b>Predicted MW.:</b> 38 kDa <b>Subcellular Location:</b> Secreted ,Cell membrane
--	---	--

**— VALIDATION IMAGES —**

Tissue/cell: human colon carcinoma; 4% Paraformaldehyde-fixed and paraffin-embedded; Antigen retrieval: citrate buffer (0.01M, pH 6.0), Boiling bathing for 15min; Block endogenous peroxidase by 3% Hydrogen peroxide for 30min; Blocking buffer (normal goat serum, C-0005) at 37°C for 20 min; Incubation: Anti-GM-CSFR alpha/CD116 Polyclonal Antibody, Unconjugated(bs-1457R) 1:200, overnight at 4°C, followed by conjugation to the secondary antibody(SP-0023) and DAB(C-0010) staining



Paraformaldehyde-fixed, paraffin embedded (Human Melanocytoma); Antigen retrieval by boiling in sodium citrate buffer (pH6.0) for 15min; Block endogenous peroxidase by 3% hydrogen peroxide for 20 minutes; Blocking buffer (normal goat serum) at 37°C for 30min; Antibody incubation with (GM-CSFR alpha) Polyclonal Antibody, Unconjugated (bs-1457R) at 1:400 overnight at 4°C, followed by operating according to SP Kit(Rabbit) (sp-0023) instructions and DAB staining.



Tissue/cell: mouse intestine tissue; 4% Paraformaldehyde-fixed and paraffin-embedded; Antigen retrieval: citrate buffer (0.01M, pH 6.0), Boiling bathing for 15min; Blocking buffer (normal goat serum, C-0005) at 37°C for 20 min; Incubation: Anti-GM-CSFR alpha/CD116 Polyclonal Antibody, Unconjugated(bs-1457R) 1:200, overnight at 4°C; The secondary antibody was Goat Anti-Rabbit IgG, Cy3 conjugated (bs-0295G-Cy3) used at 1:200 dilution for 40 minutes at 37°C. DAPI(5ug/ml, blue, C-0033) was used to stain the cell nuclei

**— SELECTED CITATIONS —**

- **[IF=4.4]** Jay Pundavela. et al. Granulocyte-Macrophage Colony Stimulating Factor Receptor Contributes to Plexiform Neurofibroma Initiation. *CANCERS*. 2025 Jan;17(5):905 IHC,IF ;Mouse. 40075752