

bs-1456R**[Primary Antibody]****Adenosine Receptor A2a Rabbit pAb****Bioss**
ANTIBODIES

www.bioss.com.cn

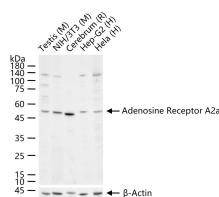
sales@bioss.com.cn

techsupport@bioss.com.cn

400-901-9800

— DATASHEET —

Host: Rabbit Clonality: Polyclonal GeneID: 135 Target: Adenosine Receptor A2a Immunogen: KLH conjugated synthetic peptide derived from human A2AR: 165-300/412. < Cytoplasmic > Purification: affinity purified by Protein A Concentration: 1mg/ml Storage: 0.01M TBS (pH7.4) with 1% BSA, 0.02% Proclin300 and 50% Glycerol. Shipped at 4°C. Store at -20°C for one year. Avoid repeated freeze/thaw cycles. Background: This gene encodes a member of the guanine nucleotide-binding protein (G protein)-coupled receptor (GPCR) superfamily, which is subdivided into classes and subtypes. The receptors are seven-pass transmembrane proteins that respond to extracellular cues and activate intracellular signal transduction pathways. This protein, an adenosine receptor of A2A subtype, uses adenosine as the preferred endogenous agonist and preferentially interacts with the G(s) and G(olf) family of G proteins to increase intracellular cAMP levels. It plays an important role in many biological functions, such as cardiac rhythm and circulation, cerebral and renal blood flow, immune function, pain regulation, and sleep. It has been implicated in pathophysiological conditions such as inflammatory diseases and neurodegenerative disorders. Alternative splicing results in multiple transcript variants. A read-through transcript composed of the upstream SPECC1L (sperm antigen with calponin homology and coiled-coil domains 1-like) and ADORA2A (adenosine A2a receptor) gene sequence has been identified, but it is thought to be non-coding. [provided by RefSeq, Jun 2013]	Isotype: IgG SWISS: P29274 Applications: WB (1:500-2000) Reactivity: Human, Mouse, Rat (predicted: Rabbit, Pig, Cow, Dog, Horse) Predicted MW.: 45 kDa Subcellular Location: Cell membrane
---	--

— VALIDATION IMAGES —

25 ug total protein per lane of various lysates
(see on figure) probed with Adenosine Receptor
A2a polyclonal antibody, unconjugated
(bs-1456R) at 1:1000 dilution and 4°C overnight
incubation. Followed by conjugated secondary
antibody incubation at r.t. for 60 min.

— SELECTED CITATIONS —

- **[IF=8.9]** Shuting Pan. et al. Regulating Biomolecular Surface Interactions Using Tunable Acoustic Streaming. ACS SENSORS. 2023;XXXX(XXX):XXX-XXX Other ;. 10.1021/acssensors.3c00982
- **[IF=6.1]** Xue-qi Liu. et al. Blocking ATP-P1Rs axis attenuate alcohol-related liver fibrosis. LIFE SCI. 2023 Jun;;121896 IHC

Important Note: This product as supplied is intended for research use only, not for use in human, therapeutic or diagnostic applications.

;Mouse. 37385371

- **[IF=5.195]** Junnan Cai. et al. Shufeng Jiedu capsule inhibits inflammation and apoptosis by activating A2AAR and inhibiting NF- κ B to alleviate LPS-induced ALI. J ETHNOPHARMACOL. 2022 Nov;298:115661 IF, WB ;Mouse. 36002086
- **[IF=4.366]** Aleix Martí Navia et al. Adenosine Receptors as Neuroinflammation Modulators: Role of A1 Agonists and A2A Antagonists. Cells . 2020 Jul 21;9(7):1739. IF ;rat. 32708189
- **[IF=2.34]** Cao, Zhi-Ping, et al. "Effects of cordycepin on spontaneous alternation behavior and adenosine receptors expression in hippocampus." Physiology & Behavior (2017). IHC ;Mouse. 29174913