

bs-13123R**[Primary Antibody]****Bioss**
ANTIBODIES

www.bioss.com.cn

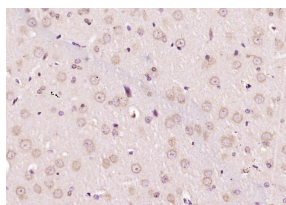
sales@bioss.com.cn

techsupport@bioss.com.cn

400-901-9800

EXTL3 Rabbit pAb**— DATASHEET —**

Host: Rabbit	Isotype: IgG	Applications: IHC-P (1:100-500)
Clonality: Polyclonal		IHC-F (1:100-500)
GeneID: 2137	SWISS: O43909	IF (1:100-500)
Target: EXTL3		
Immunogen: KLH conjugated synthetic peptide derived from human EXTL3: 351-450/919.		
Purification: affinity purified by Protein A		Reactivity: Rat (predicted: Human, Mouse, Dog, Horse)
Concentration: 1mg/ml		
Storage: 0.01M TBS (pH7.4) with 1% BSA, 0.02% Proclin300 and 50% Glycerol. Shipped at 4°C. Store at -20°C for one year. Avoid repeated freeze/thaw cycles.		Predicted MW.: 105 kDa
Background: EXTL3 is a member of the EXT (hereditary multiple exostosis) gene family of tumor suppressors encoding glycosyltransferases involved in heparan sulfate (HS) biosynthesis. Within this family, the C-terminus is conserved between all members from C. elegans to vertebrates. EXTL3 is a ubiquitously expressed, developmentally regulated, single-pass type II membrane protein that localizes to the endoplasmic reticulum membrane. EXTL3 adds N-acetylglucosamine (GlcNAc) to the polysaccharide-protein linkage region and to the growing HS chain suggesting that it plays a role in both the initiation and elongation of HS chains. In addition, EXTL3 may act as a Reg receptor, binding Reg via its N-terminus.		Subcellular Location: Cell membrane ,Cytoplasm

— VALIDATION IMAGES —

Paraformaldehyde-fixed, paraffin embedded (rat brain); Antigen retrieval by boiling in sodium citrate buffer (pH6.0) for 15min; Block endogenous peroxidase by 3% hydrogen peroxide for 20 minutes; Blocking buffer (normal goat serum) at 37°C for 30min; Antibody incubation with (EXTL3) Polyclonal Antibody, Unconjugated (bs-13123R) at 1:200 overnight at 4°C, followed by operating according to SP Kit(Rabbit) (sp-0023) instructions and DAB staining.