

bs-9021R

[Primary Antibody]

IQCJ Rabbit pAb

Bioss
ANTIBODIES

www.bioss.com.cn

sales@bioss.com.cn

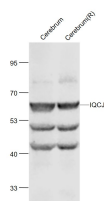
techsupport@bioss.com.cn

400-901-9800

— DATASHEET —

Host: Rabbit	Isotype: IgG	Applications: WB (1:500-2000)
Clonality: Polyclonal		Reactivity: Mouse, Rat (predicted: Human, Rabbit, Pig, Dog, Horse)
GeneID: 654502		Predicted MW.: 18 kDa
Target: IQCJ		Subcellular Location: Cell membrane ,Cytoplasm
Immunogen: KLH conjugated synthetic peptide derived from human IQCJ: 31-159/159.		
Purification: affinity purified by Protein A		
Concentration: 1mg/ml		
Storage: 0.01M TBS (pH7.4) with 1% BSA, 0.02% Proclin300 and 50% Glycerol. Shipped at 4°C. Store at -20°C for one year. Avoid repeated freeze/thaw cycles.		
Background: IQCJ (IQ domain-containing protein J) is a 159 amino acid protein that contains one IQ domain. Existing as four alternatively spliced isoforms, the gene encoding IQCJ maps to human chromosome 3q25.32. Chromosome 3 houses over 1,100 genes, including a chemokine receptor (CKR) gene cluster and a variety of human cancer-related gene loci. Key tumor suppressing genes on chromosome 3 include those that encode the apoptosis mediator RASSF1, the cell migration regulator HYAL1 and the angiogenesis suppressor SEMA3B. Marfan Syndrome, porphyria, von Hippel- Lindau syndrome, osteogenesis imperfecta and Charcot-Marie- Tooth Disease are a few of the numerous genetic diseases associated with chromosome 3.		

— VALIDATION IMAGES —



Sample: Cerebrum (Mouse) Lysate at 40 ug
Cerebrum (Rat) Lysate at 40 ug Primary: Anti-
IQCJ (bs-9021R) at 1/1000 dilution Secondary:
IRDye800CW Goat Anti-Rabbit IgG at 1/20000
dilution Predicted band size: 18'59'62 kD
Observed band size: 59 kD