

**bs-5270R****[ Primary Antibody ]****phospho-CREB-1 (Ser121) Rabbit pAb****BioSS**  
ANTIBODIES

www.bioss.com.cn

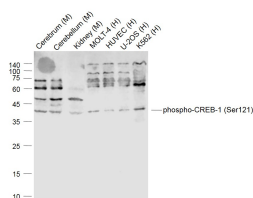
sales@bioss.com.cn

techsupport@bioss.com.cn

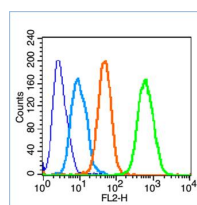
400-901-9800

**DATASHEET****Host:** Rabbit**Isotype:** IgG**Clonality:** Polyclonal**GeneID:** 1385**SWISS:** P16220**Target:** CREB-1 (Ser121)**Immunogen:** KLH conjugated Synthesised phosphopeptide derived from human CREB-1 around the phosphorylation site of Ser121: TD(p-S)QK.**Purification:** affinity purified by Protein A**Concentration:** 1mg/ml**Storage:** 0.01M TBS (pH7.4) with 1% BSA, 0.02% Proclin300 and 50% Glycerol.

Shipped at 4°C. Store at -20°C for one year. Avoid repeated freeze/thaw cycles.

**Background:** The ATF/CREB family consists of transcription factors that function through binding to the cAMP responsive element (CRE) palindromic octanucleotide, TGACCTCA. The best characterized members of this gene family include CREB-1, CREB-2, ATF-1, ATF-2, ATF-3 and ATF-4. these transcription factors share highly-related COOH terminal leucine zipper dimerization and basic DNA bindings but are highly divergent in their amino terminal domains. Although each of the ATF/CREB proteins bind CREs in their homodimeric form, in certain instances they also bind as heterodimers, both within the ATF/CREB family and with members of the AP-1 transcription factor family. It has recently been shown that protein kinase A-mediated CREB phosphorylation results in its binding to a 265kDa nuclear protein designated CBP (CREB-binding protein), which may represent a CREB co-activator.**Applications:** WB (1:500-2000)**Flow-Cyt** (1µg/Test)**Reactivity:** Human, Mouse  
(predicted: Rat, Pig, Sheep, Cow, Chicken, Horse)**Predicted MW.:** 37 kDa**Subcellular Location:** Nucleus**VALIDATION IMAGES**

Sample: Lane 1: Cerebrum (Mouse) Lysate at 40 ug  
 Lane 2: Cerebellum (Mouse) Lysate at 40 ug  
 Lane 3: Kidney (Mouse) Lysate at 40 ug  
 Primary: Anti-phospho-CREB-1 (Ser121) (bs-5270R) at 1/1000 dilution  
 Secondary: IRDye800CW Goat Anti-Rabbit IgG at 1/20000 dilution  
 Predicted band size: 42 kD  
 Observed band size: 42 kD



Blank control (blue line): HeLa cells (fixed with 70% methanol (Overnight at 4°C) and then permeabilized with 90% ice-cold methanol for 20 min at -20°C).  
 Primary Antibody (green line): Rabbit Anti-phospho-CREB-1(Ser121) antibody (bs-5270R), Dilution: 1µg / 10<sup>6</sup> cells;  
 Isotype Control Antibody (orange line): Rabbit IgG.  
 Secondary Antibody (white/blue line): Goat anti-rabbit IgG-PE, Dilution: 1µg / test.