

**bs-5269R****[ Primary Antibody ]****phospho-CREB-1 (Ser142) Rabbit pAb****BioSS**  
**ANTIBODIES**

www.bioss.com.cn

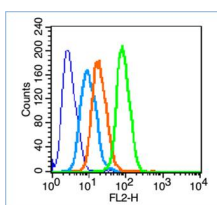
sales@bioss.com.cn

techsupport@bioss.com.cn

400-901-9800

**— DATASHEET —**

<b>Host:</b> Rabbit <b>Clonality:</b> Polyclonal <b>GeneID:</b> 1385 <b>Target:</b> CREB-1 (Ser142) <b>Immunogen:</b> KLH conjugated Synthesised phosphopeptide derived from human CREB-1 around the phosphorylation site of Ser142: DL(p-S)SD. <b>Purification:</b> affinity purified by Protein A <b>Concentration:</b> 1mg/ml <b>Storage:</b> 0.01M TBS (pH7.4) with 1% BSA, 0.02% Proclin300 and 50% Glycerol. Shipped at 4°C. Store at -20°C for one year. Avoid repeated freeze/thaw cycles. <b>Background:</b> The ATF/CREB family consists of transcription factors that function through binding to the cAMP responsive element (CRE) palindromic octanucleotide, TGACCTCA. The best characterized members of this gene family include CREB-1, CREB-2, ATF-1,ATF-2,ATF-3and ATF-4. these transcription factors share highly-related COOH terminal leucine zipper demerization and basic DNA bindings but are highly divergent in their amino terminal domains. Although each of the ATF/CREB proteins bind CREs in their homodimeric form, in cerain instances they also bind as heterodimers, both within the ATF/CREB family and with members of the AP-1 transcription factor family. It has recentlybeen shown that protein kinase A-mediated CREB phosphorylation results in its binding to a 265kDa nuclear protein designated CBP (CREB-binding protein), which may represent a CREB co-activator.	<b>Isotype:</b> IgG <b>SWISS:</b> P16220 <b>Applications:</b> <b>Flow-Cyt</b> (1µg/Test) <b>Reactivity:</b> Human (predicted: Mouse, Rat, Pig, Sheep, Cow, Chicken, Horse) <b>Predicted MW.:</b> 37 kDa <b>Subcellular Location:</b> Nucleus
---	---

**— VALIDATION IMAGES —**

Blank control (blue line): Hela cells (fixed with 70% methanol (Overnight at 4°C) and then permeabilized with 90% ice-cold methanol for 20 min at -20°C). Primary Antibody (green line): Rabbit Anti-phospho-CREB-1(Ser142) antibody (bs-5269R), Dilution: 1µg /10<sup>6</sup> cells; Isotype Control Antibody (orange line): Rabbit IgG . Secondary Antibody (white blue line): Goat anti-rabbit IgG-PE, Dilution: 1µg /test.

**— SELECTED CITATIONS —**

- **[IF=3]** Xiaoyue Guan. et al. The possible role of Gremlin1 in inflammatory apical periodontitis. ARCH ORAL BIOL. 2023 Nov;;105848 IHC,IF ;Rat,Human. 37977053