

bs-5290R**[Primary Antibody]****phospho-DOK1 (Tyr398) Rabbit pAb****Bioss**
ANTIBODIES

www.bioss.com.cn

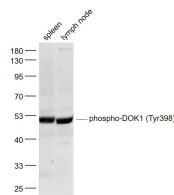
sales@bioss.com.cn

techsupport@bioss.com.cn

400-901-9800

— DATASHEET —

Host: Rabbit	Isotype: IgG	Applications: WB (1:500-2000)
Clonality: Polyclonal		Reactivity: Mouse (predicted: Human, Rat, Pig, Cow, Dog, Horse)
GeneID: 1796	SWISS: Q99704	
Target: DOK1 (Tyr398)		Predicted MW.: 53 kDa
Immunogen: KLH conjugated Synthesised phosphopeptide derived from human DOK1 around the phosphorylation site of Tyr398: EG(-Y)EL.		Subcellular Location: Cytoplasm
Purification: affinity purified by Protein A		
Concentration: 1mg/ml		
Storage: 0.01M TBS (pH7.4) with 1% BSA, 0.02% Proclin300 and 50% Glycerol. Shipped at 4°C. Store at -20°C for one year. Avoid repeated freeze/thaw cycles.		
Background: Docking protein 1 is constitutively tyrosine phosphorylated in hematopoietic progenitors isolated from chronic myelogenous leukemia (CML) patients in the chronic phase. It may be a critical substrate for p210(bcr/abl), a chimeric protein whose presence is associated with CML. Docking protein 1 contains a putative pleckstrin homology domain at the amino terminus and ten PXXP SH3 recognition motifs. Docking protein 2 binds p120 (RasGAP) from CML cells. It has been postulated to play a role in mitogenic signaling.		

— VALIDATION IMAGES —

Sample: Spleen (Mouse) Lysate at 40 ug Lymph node (Mouse) Lysate at 40 ug Primary: Anti-phospho-DOK1 (Tyr398) (bs-5290R) at 1/1000 dilution Secondary: IRDye800CW Goat Anti-Rabbit IgG at 1/20000 dilution Predicted band size: 53 kD Observed band size: 52 kD