

bs-5264R**[Primary Antibody]****phospho-CRK (Ser41) Rabbit pAb****BioSS**
ANTIBODIES

www.bioss.com.cn

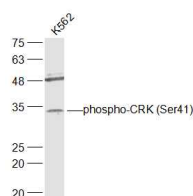
sales@bioss.com.cn

techsupport@bioss.com.cn

400-901-9800

— DATASHEET —

<p>Host: Rabbit</p> <p>Clonality: Polyclonal</p> <p>GeneID: 1398</p> <p>Target: CRK (Ser41)</p> <p>Immunogen: KLH conjugated Synthesised phosphopeptide derived from human CRK around the phosphorylation site of Ser41: DS(p-S)TS.</p> <p>Purification: affinity purified by Protein A</p> <p>Concentration: 1mg/ml</p> <p>Storage: 0.01M TBS (pH7.4) with 1% BSA, 0.02% Proclin300 and 50% Glycerol. Shipped at 4°C. Store at -20°C for one year. Avoid repeated freeze/thaw cycles.</p> <p>Background: This gene encodes a member of an adapter protein family that binds to several tyrosine-phosphorylated proteins. The product of this gene has several SH2 and SH3 domains (src-homology domains) and is involved in several signaling pathways, recruiting cytoplasmic proteins in the vicinity of tyrosine kinase through SH2-phosphotyrosine interaction. The N-terminal SH2 domain of this protein functions as a positive regulator of transformation whereas the C-terminal SH3 domain functions as a negative regulator of transformation. Two alternative transcripts encoding different isoforms with distinct biological activity have been described.</p>	<p>Isotype: IgG</p> <p>SWISS: P46108</p> <p>Applications: WB (1:500-2000)</p> <p>Reactivity: Human (predicted: Mouse, Rat, Rabbit, Pig, Sheep, Dog, Horse)</p> <p>Predicted MW.: 34 kDa</p> <p>Subcellular Location: Cell membrane ,Cytoplasm</p>
---	---

— VALIDATION IMAGES —

Sample: K562(Human) Cell Lysate at 30 ug
 Primary: Anti-phospho-CRK (Ser41) (bs-5264R) at 1/1000 dilution
 Secondary: IRDye800CW Goat Anti-Rabbit IgG at 1/20000 dilution
 Predicted band size: 34 kD
 Observed band size: 34 kD