
GRPEL2 Rabbit pAb

Catalog Number: bs-16325R

Target Protein: GRPEL2

Concentration: 1mg/ml

Form: Liquid

Host: Rabbit

Clonality: Polyclonal

Isotype: IgG

Applications: IHC-P (1:100-500), IHC-F (1:100-500), IF (1:100-500)

Reactivity: Rat (predicted:Human, Mouse, Rabbit, Pig, Sheep, Cow, Dog, Horse)

Predicted MW: 21 kDa

Subcellular Cytoplasm

Locations:

Entrez Gene: 134266

Swiss Prot: Q8TAA5

Source: KLH conjugated synthetic peptide derived from human GRPEL2: 33-130/225.

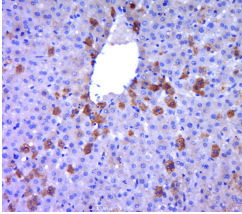
Purification: affinity purified by Protein A

Storage: 0.01M TBS (pH7.4) with 1% BSA, 0.02% Proclin300 and 50% Glycerol.

Shipped at 4°C. Store at -20°C for one year. Avoid repeated freeze/thaw cycles.

Background: GrpEL2 (GrpE protein homolog 2) is a 225 amino acid mitochondrial matrix protein and component of the PAM complex. Consisting of Tim44, Tim14, HSP 70, Magmas, GrpEL1 and GrpEL2, the PAM complex plays an essential role in the ATP-dependent translocation of transit peptide-containing proteins to the mitochondrial matrix from the inner membrane. GrpEL2 regulates the nucleotide-dependent binding of mitochondrial HSP70 to substrate proteins and stimulates its ATPase activity. The gene encoding GrpEL2 maps to human chromosome 5, which contains 181 million base pairs and comprises nearly 6% of the human genome. Deletion of the p arm of chromosome 5 leads to Cri du chat syndrome, while deletion of the q arm or of chromosome 5 altogether is common in therapy-related acute myelogenous leukemias and myelodysplastic syndrome.

VALIDATION IMAGES



Paraformaldehyde-fixed, paraffin embedded (rat liver tissue); Antigen retrieval by boiling in sodium citrate buffer (pH6.0) for 15min; Block endogenous peroxidase by 3% hydrogen peroxide for 20 minutes; Blocking buffer (normal goat serum) at 37°C for 30min; Antibody incubation with (GRPEL2) Polyclonal Antibody, Unconjugated (bs-16325R) at 1:400 overnight at 4°C, followed by a conjugated secondary (sp-0023) for 20 minutes and DAB staining.