

## GRK4 Rabbit pAb

Catalog Number: bs-16318R

Target Protein: GRK4

Concentration: 1mg/ml

Form: Liquid

Host: Rabbit

Clonality: Polyclonal

Isotype: IgG

Applications: WB (1:500-2000)

Reactivity: Mouse (predicted:Human, Rat, Chicken)

Predicted MW: 67 kDa

Subcellular Cytoplasm

Locations:

Entrez Gene: 2868

Swiss Prot: P32298

Source: KLH conjugated synthetic peptide derived from human GRK4: 201-300/578.

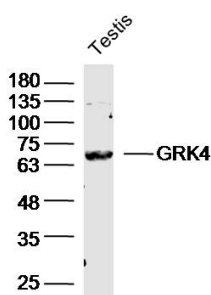
Purification: affinity purified by Protein A

Storage: 0.01M TBS (pH7.4) with 1% BSA, 0.02% Proclin300 and 50% Glycerol.

Shipped at 4°C. Store at -20°C for one year. Avoid repeated freeze/thaw cycles.

**Background:** This gene encodes a member of the guanine nucleotide-binding protein (G protein)-coupled receptor kinase subfamily of the Ser/Thr protein kinase family. The protein phosphorylates the activated forms of G protein-coupled receptors thus initiating its deactivation. This gene has been linked to both genetic and acquired hypertension. Several transcript variants encoding different isoforms have been found for this gene. [provided by RefSeq, Nov 2013]

### VALIDATION IMAGES



Sample: Testis (Mouse) Lysate at 40 ug Primary: Anti-GRK4 (bs-16318R) at 1/300 dilution Secondary: IRDye800CW Goat Anti-Rabbit IgG at 1/20000 dilution Predicted band size: 67 kD Observed band size: 67 kD