

**bs-3941R****[ Primary Antibody ]****G protein beta 1 Rabbit pAb****Bioss**  
**ANTIBODIES**

www.bioss.com.cn

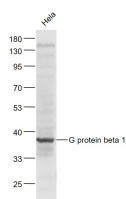
sales@bioss.com.cn

techsupport@bioss.com.cn

400-901-9800

**— DATASHEET —**

<b>Host:</b> Rabbit	<b>Isotype:</b> IgG	<b>Applications:</b> WB (1:500-2000)
<b>Clonality:</b> Polyclonal		<b>Reactivity:</b> Human (predicted: Mouse, Rat, Pig, Sheep, Cow, Chicken)
<b>GeneID:</b> 2782	<b>SWISS:</b> P62873	<b>Predicted MW.:</b> 37 kDa
<b>Target:</b> G protein beta 1		<b>Subcellular Location:</b> Cell membrane ,Cytoplasm
<b>Immunogen:</b> KLH conjugated synthetic peptide derived from human G protein beta 1: 21-120/340.		
<b>Purification:</b> affinity purified by Protein A		
<b>Concentration:</b> 1mg/ml		
<b>Storage:</b> 0.01M TBS (pH7.4) with 1% BSA, 0.02% Proclin300 and 50% Glycerol. Shipped at 4°C. Store at -20°C for one year. Avoid repeated freeze/thaw cycles.		
<b>Background:</b> Heterotrimeric guanine nucleotide binding proteins (G proteins), which integrate signals between receptors and effector proteins, are composed of an alpha, a beta, and a gamma subunit. GNB1 is a beta subunit. The beta and gamma chains are required for the GTPase activity, for replacement of GDP by GTP, and for G protein-effector interaction.		

**— VALIDATION IMAGES —**

Sample: HeLa(Human) Cell Lysate at 30 ug  
Primary: Anti- G protein beta 1 (bs-3941R) at 1/1000 dilution Secondary: IRDye800CW Goat Anti-Rabbit IgG at 1/20000 dilution Predicted band size: 37 kD Observed band size: 37 kD