

bs-3928R**[Primary Antibody]****ALS2CR2 Rabbit pAb****BioSS**
ANTIBODIES

www.bioss.com.cn

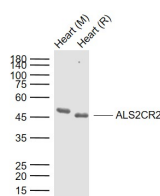
sales@bioss.com.cn

techsupport@bioss.com.cn

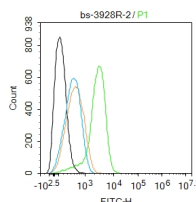
400-901-9800

— DATASHEET —

Host: Rabbit	Isotype: IgG	Applications: WB (1:500-2000) Flow-Cyt (2ug/Test)
Clonality: Polyclonal		Reactivity: Human, Mouse, Rat
GeneID: 55437	SWISS: Q9C0K7	
Target: ALS2CR2		
Immunogen: KLH conjugated synthetic peptide derived from human ALS2CR2: 251-350/418.		
Purification: affinity purified by Protein A		
Concentration: 1mg/ml		
Storage: 0.01M TBS (pH7.4) with 1% BSA, 0.02% Proclin300 and 50% Glycerol. Shipped at 4°C. Store at -20°C for one year. Avoid repeated freeze/thaw cycles.		
Background: Amyotrophic lateral sclerosis 2 (juvenile) chromosome region, candidate 2, is connected to transferase/kinase activity and ATP binding, it has recently been shown to interact with XIAP, a member of the IAP (Inhibitor of Apoptosis) protein family. Together, these two proteins synergistically activate the TAK1/JNK1 signal transduction pathway, which acts to protect against the interleukin-1 converting enzyme of Fas-induced apoptosis. This protein was independently isolated and characterized as polyploidy-associated protein kinase (PAPK), a member of the Ste20/germinal center kinase family that modulates cytoskeletal organization and cell survival, suggesting that its protective role may be a function of its kinase activity. Although two mRNA sequences have been isolated, only the shorter isoform has been observed.		
		Predicted MW.: 34 kDa
		Subcellular Location: Cytoplasm ,Nucleus

— VALIDATION IMAGES —

Sample: Lane 1: Mouse Heart tissue lysates Lane 2: Rat Heart tissue lysates Primary: Anti-ALS2CR2 (bs-3928R) at 1/1000 dilution Secondary: IRDye800CW Goat Anti-Rabbit IgG at 1/20000 dilution Predicted band size: 34 kDa Observed band size: 47 kDa



Blank control: SH-SY5Y. Primary Antibody (green line): Rabbit Anti-ALS2CR2 antibody (bs-3928R) Dilution: 2ug/Test; Secondary Antibody : Goat anti-rabbit IgG-FITC Dilution: 0.5ug/Test. Protocol The cells were fixed with 4% PFA (10min at room temperature) and then permeabilized with 90% ice-cold methanol for 20 min at -20°C. The cells were then incubated in 5% BSA to block non-specific protein-protein interactions for 30 min at room temperature. Cells stained with Primary Antibody for 30 min at room temperature. The secondary antibody used for 40 min at room temperature. Acquisition of 20,000 events was performed.