

bs-2350R**[Primary Antibody]****Bioss**
ANTIBODIES

www.bioss.com.cn

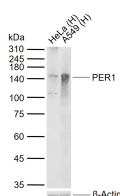
sales@bioss.com.cn

techsupport@bioss.com.cn

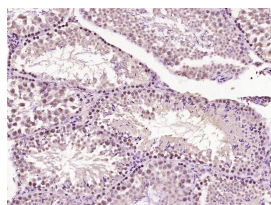
400-901-9800

PER1 Rabbit pAb**— DATASHEET —**

Host: Rabbit	Isotype: IgG	Applications: WB (1:500-2000)
Clonality: Polyclonal		IHC-P (1:100-500)
GeneID: 5187	SWISS: O15534	IHC-F (1:100-500)
Target: PER1		IF (1:100-500)
Immunogen: KLH conjugated synthetic peptide derived from human PER1 protein: 751-850/1290.		Reactivity: Human, Mouse (predicted: Rat, Rabbit, Pig, Cow, Dog, Horse)
Purification: affinity purified by Protein A		
Concentration: 1mg/ml		Predicted MW.: 136 kDa
Storage: 0.01M TBS (pH7.4) with 1% BSA, 0.02% Proclin300 and 50% Glycerol. Shipped at 4°C. Store at -20°C for one year. Avoid repeated freeze/thaw cycles.		Subcellular Location: Cytoplasm ,Nucleus
Background: In mammals, several genes that encode members of the basic helix-loop helix (bHLH) PAS (PER-ARNT-SIM) transcription factor family have been shown to play a significant role in regulating circadian oscillations. Transactivation of CLOCK-induced genes is mediated via an E box enhancer (CACGTG) found upstream of target genes. CLOCK-ARNT 3 heterodimers bind to E box regulatory elements and stimulate gene transcription. CLOCK has been shown to transactivate the mammalian homolog of Drosophila PER. PER, in concert with the product of the mammalian timeless gene (TIM), negatively regulates its own transcription by blocking the activity of the CLOCK-BMAL 1 transactivation complex.		

— VALIDATION IMAGES —

Sample: Lane 1: Human HeLa cell lysates Lane 2: Human A549 cell lysates Primary: Anti-PER1 (bs-2350R) at 1/1000 dilution Secondary: IRDye800CW Goat Anti-Rabbit IgG at 1/20000 dilution Predicted band size: 136 kDa Observed band size: 142 kDa



Paraformaldehyde-fixed, paraffin embedded (Mouse testis); Antigen retrieval by boiling in sodium citrate buffer (pH6.0) for 15min; Block endogenous peroxidase by 3% hydrogen peroxide for 20 minutes; Blocking buffer (normal goat serum) at 37°C for 30min; Antibody incubation with (PER1 protein) Polyclonal Antibody, Unconjugated (bs-2350R) at 1:400 overnight at 4°C, followed by operating according to SP Kit(Rabbit) (sp-0023) instructions and DAB staining.

— SELECTED CITATIONS —

- **[IF=2.486]** Elvira Del Carmen Arellanes-Licea . et al. Obese Neotomodon alstoni mice exhibit sexual dimorphism in the daily profile of circulating melatonin and clock proteins PER1 and BMAL1 in the hypothalamus and peripheral oscillators. 2021 Jan 03 WB ;Mouse. 33393371
- **[IF=1.778]** S.-Q. Zhao. et al. cAMP/PKA/CREB signaling pathway-mediated effects of melatonin receptor genes on clock gene expression in Bactrian camel ovarian granulosa cells. Domest Anim Endocrin. 2021 Jul;76:106609 IHC ;Camel.

Important Note: This product as supplied is intended for research use only, not for use in human, therapeutic or diagnostic applications.

33636446