

**bs-22371R****[ Primary Antibody ]**

## Calcium Sensing Receptor Rabbit pAb

**Bioss**  
**ANTIBODIES**

www.bioss.com.cn

sales@bioss.com.cn

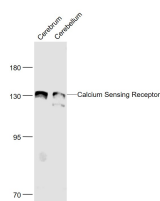
techsupport@bioss.com.cn

400-901-9800

### — DATASHEET —

<b>Host:</b> Rabbit	<b>Isotype:</b> IgG	<b>Applications:</b> WB (1:500-2000)
<b>Clonality:</b> Polyclonal		
<b>GeneID:</b> 846	<b>SWISS:</b> P41180	
<b>Target:</b> Calcium Sensing Receptor		
<b>Immunogen:</b> KLH conjugated synthetic peptide derived from human Calcium Sensing Receptor: 71-170/1078.		
<b>Purification:</b> affinity purified by Protein A		<b>Reactivity:</b> Mouse, Rat (predicted: Human, Rabbit, Sheep, Cow)
<b>Concentration:</b> 1mg/ml		<b>Predicted MW.:</b> 118 kDa
<b>Storage:</b> 0.01M TBS (pH7.4) with 1% BSA, 0.02% Proclin300 and 50% Glycerol. Shipped at 4°C. Store at -20°C for one year. Avoid repeated freeze/thaw cycles.		<b>Subcellular Location:</b> Cell membrane
<b>Background:</b> Extracellular calcium-sensing receptor (CaSR), also designated parathyroid cell calcium-sensing receptor, is an integral membrane protein that belongs to the G protein-coupled receptor 3 family. CaSR is involved in maintaining a stable calcium concentration by acting as an sensor of the extracellular calcium levels for the parathyroid and kidney. Its activity is mediated by a G protein which activates a phosphatidylinositol-calcium second messenger		

### — VALIDATION IMAGES —



Sample: Cerebrum (Rat) Lysate at 40 ug  
Cerebellum (Mouse) Lysate at 40 ug  
Primary: Anti- Calcium Sensing Receptor (bs-22371R) at 1/1000 dilution  
Secondary: IRDye800CW Goat Anti-Rabbit IgG at 1/20000 dilution  
Predicted band size: 118 kD  
Observed band size: 130 kD