
ADCY5 Rabbit pAb

Catalog Number: bs-3922R

Target Protein: ADCY5

Concentration: 1mg/ml

Form: Liquid

Host: Rabbit

Clonality: Polyclonal

Isotype: IgG

Applications: WB (1:500-2000)

Reactivity: Mouse, Rat (predicted:Human, Pig, Sheep, Cow, Horse)

Predicted MW: 139 kDa

Entrez Gene: 111

Swiss Prot: O95622

Source: KLH conjugated synthetic peptide derived from human ADCY5: 857-909/1261.

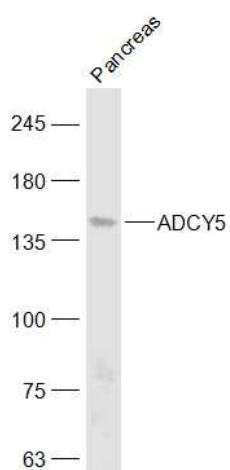
Purification: affinity purified by Protein A

Storage: 0.01M TBS (pH7.4) with 1% BSA, 0.02% Proclin300 and 50% Glycerol.

Shipped at 4°C. Store at -20°C for one year. Avoid repeated freeze/thaw cycles.

Background: This gene encodes a member of the membrane-bound adenylyl cyclase enzymes. Adenylyl cyclases mediate G protein-coupled receptor signaling through the synthesis of the second messenger cAMP. Activity of the encoded protein is stimulated by the Gs alpha subunit of G protein-coupled receptors and is inhibited by protein kinase A, calcium and Gi alpha subunits. Single nucleotide polymorphisms in this gene may be associated with low birth weight and type 2 diabetes. Alternatively spliced transcript variants that encode different isoforms have been observed for this gene. [provided by RefSeq, Dec 2010].

VALIDATION IMAGES



Sample: Pancreas (Mouse) Lysate at 40 ug Primary: Anti-ADCY5 (bs-3922R) at 1/1000 dilution Secondary: IRDye800CW Goat Anti-Rabbit IgG at 1/20000 dilution Predicted band size: 139 kD Observed band size: 139 kD

PRODUCT SPECIFIC PUBLICATIONS

[IF=5.4] Taotao Li. et al. Rosemary (*Rosmarinus officinalis* L.) hydrosol based on serotonergic synapse for insomnia. J ETHNOPHARMACOL. 2023 Jul;:116984 IHC,WB ; Rat . 37532071