

**bs-3916R****[ Primary Antibody ]****BioSS**  
ANTIBODIES

www.bioss.com.cn

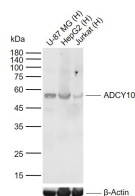
sales@bioss.com.cn

techsupport@bioss.com.cn

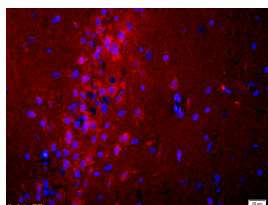
400-901-9800

**ADCY10 Rabbit pAb****— DATASHEET —**

<b>Host:</b> Rabbit <b>Clonality:</b> Polyclonal <b>GeneID:</b> 55811 <b>Target:</b> ADCY10 <b>Immunogen:</b> KLH conjugated synthetic peptide derived from human ADCY10: 1101-1200/1610. <b>Purification:</b> affinity purified by Protein A <b>Concentration:</b> 1mg/ml <b>Storage:</b> 0.01M TBS (pH7.4) with 1% BSA, 0.02% Proclin300 and 50% Glycerol. Shipped at 4°C. Store at -20°C for one year. Avoid repeated freeze/thaw cycles. <b>Background:</b> ADCY10 belongs to a distinct class of mammalian adenylyl cyclase that is soluble and insensitive to G protein or forskolin regulation. It is localized in the cytoplasm and is thought to function as a general bicarbonate sensor throughout the body. It may also play an important role in the generation of cAMP in spermatozoa, implying possible roles in sperm maturation through the epididymis, capacitation, hypermotility, and/or the acrosome reaction.	<b>Isotype:</b> IgG <b>SWISS:</b> Q96PN6	<b>Applications:</b> <b>WB</b> (1:500-2000) <b>IHC-P</b> (1:100-500) <b>IHC-F</b> (1:100-500) <b>IF</b> (1:200) <b>Reactivity:</b> Human, Rat (predicted: Mouse, Rabbit, Pig, Cow, Dog, Horse) <b>Predicted MW.:</b> 187 kDa <b>Subcellular Location:</b> Cell membrane ,Cytoplasm
--	---	---

**— VALIDATION IMAGES —**

Sample: Lane 1: Human U-87 MG cell lysates  
 Lane 2: Human HepG2 cell lysates Lane 3: Human Jurkat cell lysates  
 Primary: Anti-ADCY10 (bs-3916R) at 1/1000 dilution  
 Secondary: IRDye800CW Goat Anti-Rabbit IgG at 1/20000 dilution  
 Predicted band size: 187 kDa  
 Observed band size: 55 kDa



Tissue/cell: rat brain tissue;4% Paraformaldehyde-fixed and paraffin-embedded; Antigen retrieval: citrate buffer (0.01M, pH 6.0 ), Boiling bathing for 15min; Blocking buffer (normal goat serum,C-0005) at 37°C for 20 min; Incubation: Anti-ADCY10 Polyclonal Antibody, Unconjugated(bs-3916R) 1:200, overnight at 4°C; The secondary antibody was Goat Anti-Rabbit IgG, Cy3 conjugated(bs-0295G-Cy3)used at 1:200 dilution for 40 minutes at 37°C. DAPI(5ug/ml,blue,C-0033) was used to stain the cell nuclei

**— SELECTED CITATIONS —**

- **[IF=6.208]** Qifu He. et al. Alkaline Dilution Alters Sperm Motility in Dairy Goat by Affecting sAC/cAMP/PKA Pathway Activity. INT J MOL SCI. 2023 Jan;24(2):1771 WB ;Goat. 36675287