

**bs-3909R****[ Primary Antibody ]****BioSS**  
**ANTIBODIES**

www.bioss.com.cn

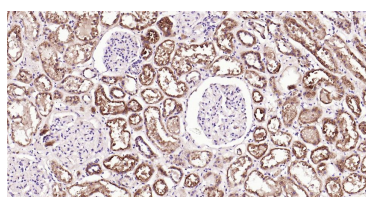
sales@bioss.com.cn

techsupport@bioss.com.cn

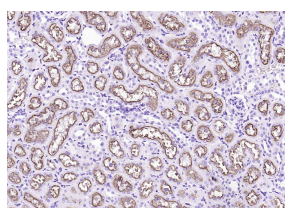
400-901-9800

**LRP2 Rabbit pAb****— DATASHEET —**

<b>Host:</b> Rabbit	<b>Isotype:</b> IgG	<b>Applications:</b> IHC-P (1:100-500)
<b>Clonality:</b> Polyclonal		<b>IHC-F</b> (1:100-500)
<b>GeneID:</b> 4036	<b>SWISS:</b> P98164	<b>IF</b> (1:100-500)
<b>Target:</b> LRP2		<b>Reactivity:</b> Human, Mouse, Rat
<b>Immunogen:</b> KLH conjugated synthetic peptide derived from human LRP2: 3401-3500/4655. < Extracellular >		
<b>Purification:</b> affinity purified by Protein A		<b>Predicted MW.:</b> 519 kDa
<b>Concentration:</b> 1mg/ml		<b>Subcellular Location:</b> Cell membrane
<b>Storage:</b> 0.01M TBS (pH7.4) with 1% BSA, 0.02% Proclin300 and 50% Glycerol. Shipped at 4°C. Store at -20°C for one year. Avoid repeated freeze/thaw cycles.		
<b>Background:</b> The protein encoded by this gene, low density lipoprotein-related protein 2 (LRP2) or megalin, is a multi-ligand endocytic receptor that is expressed in many different tissues but primarily in absorptive epithelial tissues such as the kidney. This glycoprotein has a large amino-terminal extracellular domain, a single transmembrane domain, and a short carboxy-terminal cytoplasmic tail. The extracellular ligand-binding-domains bind diverse macromolecules including albumin, apolipoproteins B and E, and lipoprotein lipase. The LRP2 protein is critical for the reuptake of numerous ligands, including lipoproteins, sterols, vitamin-binding proteins, and hormones. This protein also has a role in cell-signaling; extracellular ligands include parathyroid hormones and the morphogen sonic hedgehog while cytosolic ligands include MAP kinase scaffold proteins and JNK interacting proteins. Recycling of this membrane receptor is regulated by phosphorylation of its cytoplasmic domain. Mutations in this gene cause Donnai-Barrow syndrome (DBS) and facio-oculoacoustico-renal syndrome (FOAR).[provided by RefSeq, Aug 2009].		

**— VALIDATION IMAGES —**

Paraformaldehyde-fixed, paraffin embedded Human Kidney; Antigen retrieval by boiling in sodium citrate buffer (pH6.0) for 15 min; Antibody incubation with LRP2 Polyclonal Antibody, Unconjugated (bs-3909R) at 1:200 overnight at 4°C, followed by conjugation to the bs-0295G-HRP and DAB (C-0010) staining.



Paraformaldehyde-fixed, paraffin embedded (rat kidney); Antigen retrieval by boiling in sodium citrate buffer (pH6.0) for 15min; Block endogenous peroxidase by 3% hydrogen peroxide for 20 minutes; Blocking buffer (normal goat serum) at 37°C for 30min; Antibody incubation with (LRP2 ) Polyclonal Antibody, Unconjugated (bs-3909R) at 1:200 overnight at 4°C, followed by operating according to SP Kit(Rabbit) (sp-0023) instructions and DAB staining.

**— SELECTED CITATIONS —**

- **[IF=15.1]** Xu-Rui Gu. et al. A renal-targeted gene delivery system derived from spermidine for arginase-2 silencing and

Important Note: This product as supplied is intended for research use only, not for use in human, therapeutic or diagnostic applications.

synergistic attenuation of drug-induced acute kidney injury. CHEM ENG J. 2024 Apr;486:150125 IHC,FCM  
;Mouse,Human. 10.1016/j.cej.2024.150125

- **[IF=4.6]** Durinova Anna. et al. Radiolabeled 15-mer peptide internalization is mediated by megalin (LRP2 receptor) in a CRISPR/Cas9-based LRP2 knockout human kidney cell model. EJNMMI Radiopharmacy and Chemistry. 2024 Dec;9(1):1-16 FCM ;Human. 38637347
- **[IF=0.88]** Erikci, Acelya, Gulberk Ucar, and Samiye Yabanoglu-Ciftci. "Role of serotonin in the regulation of renal proximal tubular epithelial cells." Renal failure 38.7 (2016): 1141-1150. Other ;="Mouse". 27277500