

**bs-22732R****[ Primary Antibody ]****CD4 Rabbit pAb****Bioss**  
**ANTIBODIES**

www.bioss.com.cn

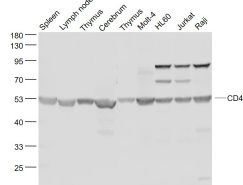
sales@bioss.com.cn

techsupport@bioss.com.cn

400-901-9800

**— DATASHEET —**

<b>Host:</b> Rabbit	<b>Isotype:</b> IgG	<b>Applications:</b> WB (1:500-2000)
<b>Clonality:</b> Polyclonal		<b>Reactivity:</b> Human, Mouse, Rat (predicted: Pig, Sheep, Cow, Dog, GuineaPig, MACFA)
<b>GeneID:</b> 920	<b>SWISS:</b> P01730	<b>Predicted MW.:</b> 48 kDa
<b>Target:</b> CD4		<b>Subcellular Location:</b> Cell membrane
<b>Immunogen:</b> KLH conjugated synthetic peptide derived from human CD4: 385-457/457. < Cytoplasmic >		
<b>Purification:</b> affinity purified by Protein A		
<b>Concentration:</b> 1mg/ml		
<b>Storage:</b> 0.01M TBS (pH7.4) with 1% BSA, 0.02% Proclin300 and 50% Glycerol. Shipped at 4°C. Store at -20°C for one year. Avoid repeated freeze/thaw cycles.		
<b>Background:</b> This gene encodes a membrane glycoprotein of T lymphocytes that interacts with major histocompatibility complex class II antigens and is also a receptor for the human immunodeficiency virus. This gene is expressed not only in T lymphocytes, but also in B cells, macrophages, and granulocytes. It is also expressed in specific regions of the brain. The protein functions to initiate or augment the early phase of T-cell activation, and may function as an important mediator of indirect neuronal damage in infectious and immune-mediated diseases of the central nervous system. Multiple alternatively spliced transcript variants encoding different isoforms have been identified in this gene. [provided by RefSeq, Aug 2010].		

**— VALIDATION IMAGES —**

Sample: Spleen (Mouse) Lysate at 40 ug Lymph node (Mouse) Lysate at 40 ug Thymus (Mouse) Lysate at 40 ug Cerebrum (Mouse) Lysate at 40 ug Thymus (Rat) Lysate at 40 ug Molt-4(Human) Cell Lysate at 30 ug HL60(Human) Cell Lysate at 30 ug Jurkat(Human) Cell Lysate at 30 ug Raji(Human) Cell Lysate at 30 ug  
 Primary: Anti-CD4 (bs-22732R) at 1/1000 dilution Secondary: IRDye800CW Goat Anti-Rabbit IgG at 1/20000 dilution  
 Predicted band size: 48 kD Observed band size: 53 kD