

bs-3898R**[Primary Antibody]****BioSS**
ANTIBODIES

www.bioss.com.cn

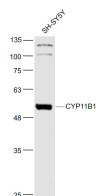
sales@bioss.com.cn

techsupport@bioss.com.cn

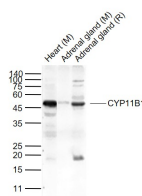
400-901-9800

CYP11B1 Rabbit pAb**DATASHEET**

Host: Rabbit Clonality: Polyclonal GeneID: 1584 Target: CYP11B1 Immunogen: KLH conjugated synthetic peptide derived from human CYP11B1: 301-400/503. Purification: affinity purified by Protein A Concentration: 1mg/ml Storage: 0.01M TBS (pH7.4) with 1% BSA, 0.02% Proclin300 and 50% Glycerol. Shipped at 4°C. Store at -20°C for one year. Avoid repeated freeze/thaw cycles. Background: This gene encodes a member of the cytochrome P450 superfamily of enzymes. The cytochrome P450 proteins are monooxygenases which catalyze many reactions involved in drug metabolism and synthesis of cholesterol, steroids and other lipids. This protein localizes to the mitochondrial inner membrane and has steroid 11-beta-hydroxylase activity. In addition to this activity, the 18 or 19-hydroxylation of steroids and the aromatization of androstendione to estrone have also been ascribed to cytochrome P450 XIB.	Isotype: IgG SWISS: P15538	Applications: WB (1:500-2000) Reactivity: Human, Mouse, Rat Predicted MW.: 55 kDa Subcellular Location: Cytoplasm
--	---	--

VALIDATION IMAGES

Sample: SH-SY5Y (Human) Cell Lysate at 30 ug
Primary: Anti- CYP11B1 (bs-3898R) at 1/1000
dilution Secondary: IRDye800CW Goat Anti-Rabbit IgG at 1/20000 dilution Predicted band size: 55 kD Observed band size: 55 kD



Sample: Lane 1: Mouse Heart tissue lysates Lane 2: Mouse Adrenal gland tissue lysates Lane 3: Rat Adrenal gland tissue lysates Primary: Anti- CYP11B1 (bs-3898R) at 1/1000 dilution
Secondary: IRDye800CW Goat Anti-Rabbit IgG at 1/20000 dilution Predicted band size: 55 kD Observed band size: 50 kD

SELECTED CITATIONS

- **[IF=7.3]** Vagnerová Karla. et al. Microbiota modulates the steroid response to acute immune stress in male mice. FRONT IMMUNOL. 2024 Feb;15: WB ;Mouse. 38361932
- **[IF=3.636]** Nakanishi Tomoya. et al. Cortisol induces follicle regression, while FSH prevents cortisol-induced follicle regression in pigs. Mol Hum Reprod. 2021 May;; WB,IF ;Pig. 34057472
- **[IF=4]** Jing-Hang Jiang. et al. Human-like adrenal features in Chinese tree shrews revealed by multi-omics analysis of adrenal cell populations and steroid synthesis. zool res.2024 May 18;45(3):617-632. IHC ;Mouse. 38766745
- **[IF=2.348]** Tyczewska et al. Expression of selected genes involved in steroidogenesis in the course of enucleation-induced rat adrenal regeneration. (2014) Int.J.Mol.Me. 33:613-23 IHC ;Rat. 24366092