

**bs-24400R****[ Primary Antibody ]****Bioss**  
ANTIBODIES

www.bioss.com.cn

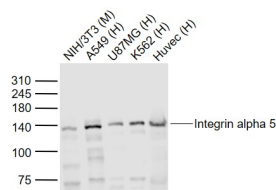
sales@bioss.com.cn

techsupport@bioss.com.cn

400-901-9800

**Integrin alpha 5 Rabbit pAb****— DATASHEET —**

<b>Host:</b> Rabbit	<b>Isotype:</b> IgG	<b>Applications:</b> WB (1:500-2000)
<b>Clonality:</b> Polyclonal		<b>Reactivity:</b> Human, Mouse (predicted: Rat, Rabbit, Pig, Sheep, Cow, Horse)
<b>GeneID:</b> 3678	<b>SWISS:</b> P08648	<b>Predicted MW.:</b> 18/110 kDa
<b>Target:</b> Integrin alpha 5		<b>Subcellular Location:</b> Cell membrane
<b>Immunogen:</b> KLH conjugated synthetic peptide derived from human Integrin alpha 5 : 981-1049/1049.		
<b>Concentration:</b> 1mg/ml		
<b>Storage:</b> 0.01M TBS (pH7.4) with 1% BSA, 0.02% Proclin300 and 50% Glycerol. Shipped at 4°C. Store at -20°C for one year. Avoid repeated freeze/thaw cycles.		
<b>Background:</b> The product of this gene belongs to the integrin alpha chain family. Integrins are heterodimeric integral membrane proteins composed of an alpha chain and a beta chain. This gene encodes the integrin alpha 5 chain. Alpha chain 5 undergoes post-translational cleavage in the extracellular domain to yield disulfide-linked light and heavy chains that join with beta 1 to form a fibronectin receptor. In addition to adhesion, integrins are known to participate in cell-surface mediated signalling. [provided by RefSeq, Jul 2008]		

**— VALIDATION IMAGES —**

Sample: Lane 1: NIH/3T3 (Mouse) Cell Lysate at 30 ug  
 Lane 2: A549 (Human) Cell Lysate at 30 ug  
 Lane 3: U87MG (Human) Cell Lysate at 30 ug  
 Lane 4: K562 (Human) Cell Lysate at 30 ug  
 Lane 5: Huvec (Human) Cell Lysate at 30 ug  
 Primary: Anti-Integrin alpha 5 (bs-24400R) at 1/1000 dilution  
 Secondary: IRDye800CW Goat Anti-Rabbit IgG at 1/20000 dilution  
 Predicted band size: 140 kD  
 Observed band size: 140 kD