

bs-2356R**[Primary Antibody]****GKRP Rabbit pAb****BioSS**
ANTIBODIES

www.bioss.com.cn

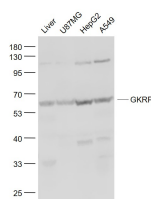
sales@bioss.com.cn

techsupport@bioss.com.cn

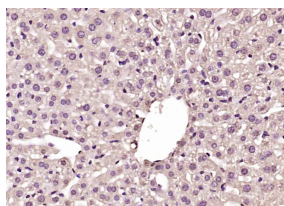
400-901-9800

— DATASHEET —**Host:** Rabbit**Isotype:** IgG**Clonality:** Polyclonal**GeneID:** 2646**SWISS:** Q14397**Target:** GKRP**Immunogen:** KLH conjugated synthetic peptide derived from human GKRP: 261-360/625.**Purification:** affinity purified by Protein A**Concentration:** 1mg/ml**Storage:** 0.01M TBS (pH7.4) with 1% BSA, 0.02% Proclin300 and 50% Glycerol.

Shipped at 4°C. Store at -20°C for one year. Avoid repeated freeze/thaw cycles.

Background: GCKR is a subfamily member of the SIS (Sugar ISomerase) family of proteins. It is a regulatory protein that inhibits glucokinase in liver and pancreatic islet cells by binding non-covalently to form an inactive complex with the enzyme. This gene is considered a susceptibility gene candidate for a form of maturity-onset diabetes of the young.**Applications:** **WB** (1:500-2000)**IHC-P** (1:100-500)**IHC-F** (1:100-500)**IF** (1:100-500)**Reactivity:** Human, Mouse
(predicted: Rat, Rabbit,
Dog, Horse)**Predicted
MW.:** 69 kDa**Subcellular
Location:** Nucleus**— VALIDATION IMAGES —**

Sample: Liver (Mouse) Lysate at 40 ug
 A549(Human) Cell Lysate at 30 ug
 U87MG(Human) Cell Lysate at 30 ug
 HepG2(Human) Cell Lysate at 30 ug
 Primary: Anti- GKRP (bs-2356R) at 1/1000 dilution
 Secondary: IRDye800CW Goat Anti-Rabbit IgG at 1/20000 dilution
 Predicted band size: 69 kD
 Observed band size: 69 kD



Paraformaldehyde-fixed, paraffin embedded (mouse liver); Antigen retrieval by boiling in sodium citrate buffer (pH6.0) for 15min; Block endogenous peroxidase by 3% hydrogen peroxide for 20 minutes; Blocking buffer (normal goat serum) at 37°C for 30min; Antibody incubation with (GKRP) Polyclonal Antibody, Unconjugated (bs-2356R) at 1:200 overnight at 4°C, followed by operating according to SP Kit(Rabbit) (sp-0023) instructions and DAB staining.